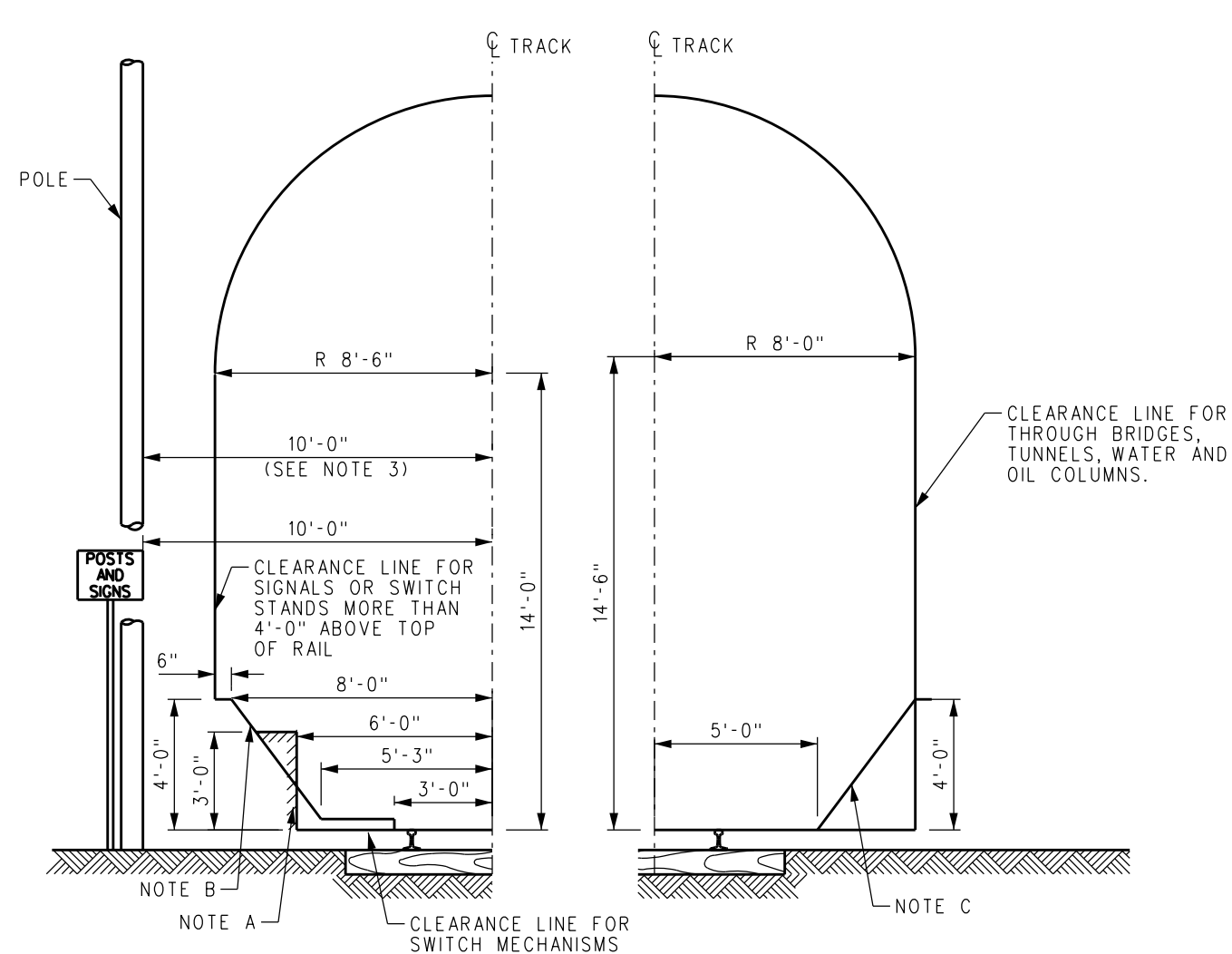


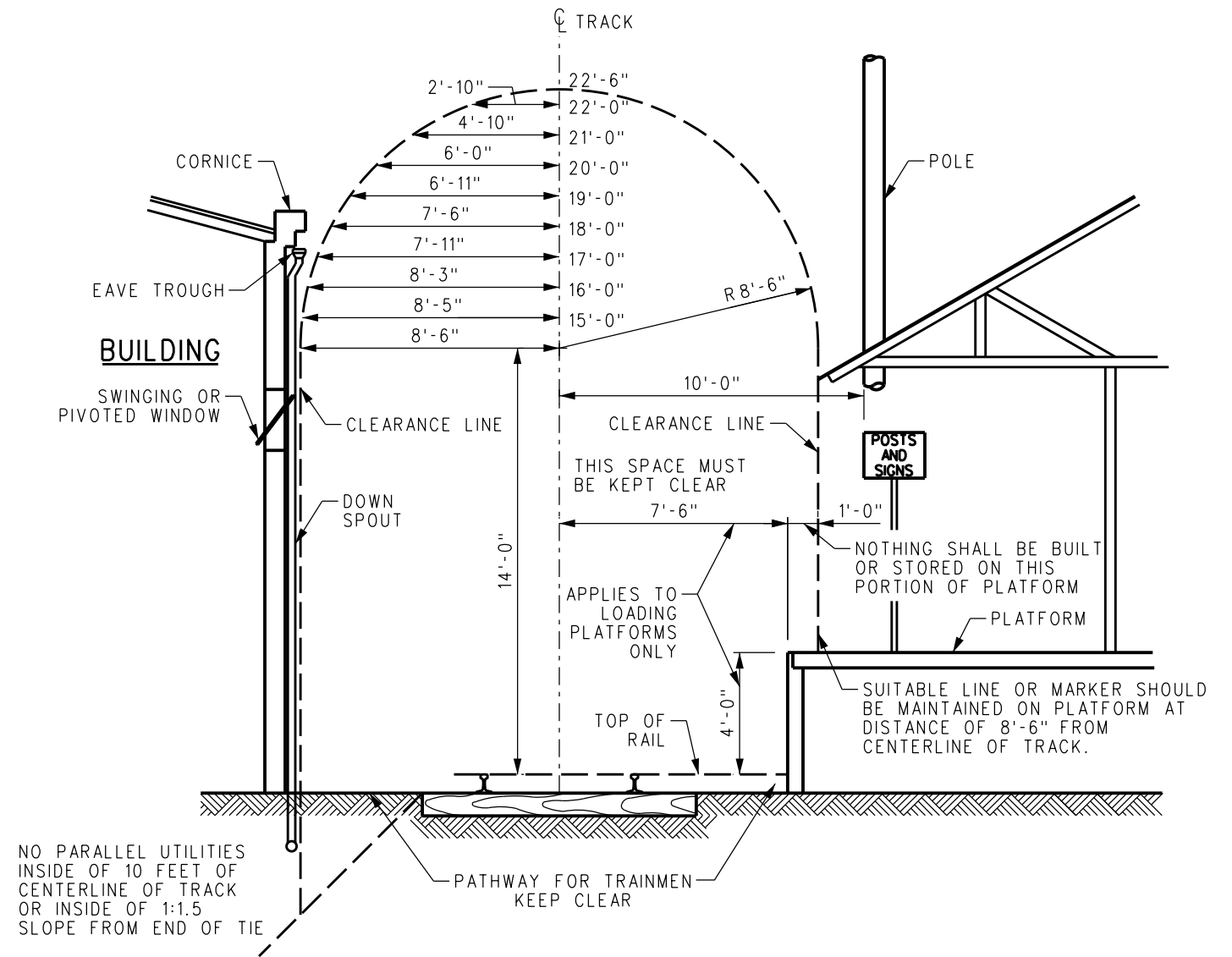
NOTES:

- A. CLEARANCE LINE SHOWN BELOW IS FOR SIGNALS OR SWITCH STANDS 3'-0" OR LESS ABOVE TOP OF RAIL AND LOCATED BETWEEN TRACKS WHERE NOT PRACTICABLE TO MAINTAIN CLEARANCES OTHERWISE PRESCRIBED.
- B. CLEARANCE LINE SHOWN BELOW IS FOR PORTIONS OF BLOCK SIGNALS 4'-0" OR LESS ABOVE TOP OF RAIL.
- C. DECREASED CLEARANCES SHOWN BELOW ARE FOR:
 - 1) REFUGE PLATFORMS ON BRIDGES AND TRESTLES NOT PROVIDED WITH WALKWAYS
 - 2) HANDRAILS
 MINIMUM CLEARANCES FOR HANDRAILS ON BRIDGES WITH WALKWAYS SHALL BE 8'-6". DECREASED CLEARANCES, EXCEPT AS PROVIDED FOR HANDRAILS ARE NOT PERMITTED ON THROUGH BRIDGES WHERE WORK OF TRAINMEN OR YARDMEN REQUIRE THEM TO BE ON DECK OF BRIDGE FOR PURPOSE OF COUPLING OR UNCOUPLING CARS IN PERFORMING SWITCHING SERVICE ON A SWITCHING LEAD.




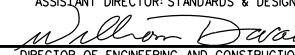
NOTES:

- 1. SEE SCRR ES2104 FOR MINIMUM VERTICAL CLEARANCES FOR OVERHEAD WIRES.
- 2. ALL CLEARANCES LISTED ON THIS SHEET ARE MINIMUM REQUIREMENTS. USE STANDARD CLEARANCES SHOWN ON SCRR ES2101 FOR NEW CONSTRUCTION.
- 3. POSTS, POLES, SIGNS AND SIMILAR FACILITIES MAY HAVE MINIMUM CLEARANCE OF 8'-6", BUT CLEARANCE OF 10'-0" IS RECOMMENDED WHERE PRACTICABLE.
- 4. ALL SIDE CLEARANCE DIMENSIONS ARE FOR TANGENT TRACK. IN GENERAL, SIDE CLEARANCE FOR CURVED TRACK SHALL BE 1'-0" GREATER THAN THAT FOR TANGENT TRACK.
- 5. PLATFORMS 4'-0" OR LESS IN HEIGHT WITH MINIMUM CLEARANCE OF 7'-3" MAY BE EXTENDED AT EXISTING CLEARANCES IF SUCH EXTENSION IS NOT IN CONNECTION WITH RECONSTRUCTION OF ORIGINAL PLATFORM.



**TYPICAL
CLEARANCE OF STRUCTURES FROM RAILROAD TRACKS
AS GENERALLY PRESCRIBED BY
PUBLIC UTILITIES COMMISSION - STATE OF CALIFORNIA
GENERAL ORDER NO 26-D**

(EFFECTIVE FEBRUARY 1, 1948)
FOR NEW WORK AND RECONSTRUCTION OF EXISTING FACILITIES ADJACENT
TO STANDARD GAUGE RAILROAD TRACKS TRANSPORTING FREIGHT CARS.

REV.	DATE	DESCRIPTION	DES.	ENG.
X	XX-XX-XX	REVISION	XX	XX
DRAWN BY: A. CARLOS		DATE: 03/31/2011	SCRR ENGINEERING STANDARDS ARE INTENDED FOR SCRR APPROVED USES ONLY. FOR NON-SCRR APPROVED USES, SCRR SHALL NOT BE RESPONSIBLE FOR THE ACCURACY OR COMPLETENESS OF THE DATA OR INFORMATION CONTAINED HEREIN. THE SELECTION AND USE OF THESE STANDARDS IS THE SOLE RESPONSIBILITY OF THE USER AND SHOULD NOT BE USED WITHOUT CONSULTING A REGISTERED PROFESSIONAL ENGINEER. ALL WARRANTIES AND REPRESENTATIONS OF ANY KIND ARE DISCLAIMED. ANYONE MAKING USE OF THIS INFORMATION AGREES THAT IT ASSUMES ALL LIABILITY ARISING FROM SUCH USE. NO PART OF THESE STANDARDS SHOULD BE REPRODUCED OR DISTRIBUTED IN ANY FORM OR BY ANY MEANS WITHOUT THE PRIOR WRITTEN PERMISSION OF SCRR. ALL RIGHTS RESERVED.	
 ASSISTANT DIRECTOR: STANDARDS & DESIGN		 DIRECTOR OF ENGINEERING AND CONSTRUCTION		

SCRR ENGINEERING STANDARDS ARE INTENDED FOR SCRR APPROVED USES ONLY. FOR NON-SCRR APPROVED USES, SCRR SHALL NOT BE RESPONSIBLE FOR THE ACCURACY OR COMPLETENESS OF THE DATA OR INFORMATION CONTAINED HEREIN. THE SELECTION AND USE OF THESE STANDARDS IS THE SOLE RESPONSIBILITY OF THE USER AND SHOULD NOT BE USED WITHOUT CONSULTING A REGISTERED PROFESSIONAL ENGINEER. ALL WARRANTIES AND REPRESENTATIONS OF ANY KIND ARE DISCLAIMED. ANYONE MAKING USE OF THIS INFORMATION AGREES THAT IT ASSUMES ALL LIABILITY ARISING FROM SUCH USE. NO PART OF THESE STANDARDS SHOULD BE REPRODUCED OR DISTRIBUTED IN ANY FORM OR BY ANY MEANS WITHOUT THE PRIOR WRITTEN PERMISSION OF SCRR. ALL RIGHTS RESERVED.


 SOUTHERN CALIFORNIA REGIONAL RAIL AUTHORITY
 ONE GATEWAY PLAZA, 12TH FLOOR, L. A., CA. 90012

ENGINEERING STANDARDS
 MINIMUM CLEARANCE OF STRUCTURES

STANDARD	2102
SCALE:	NTS
REVISION SHEET	1 OF 1
CADD FILE:	ES2102