

ARCHITECTURAL

ACOUS ACOUSTICAL
ALUM ALUMINUM
AFF ABOVE FINISHED FLOOR

BD BOARD
BITUM BITUMINOUS
BLKG BLOCKING
BM BEAM

CAB CABINET
CER CERAMIC
CI CAST IRON
CIP CAST IRON PIPE
CLG CEILING
CLKG CAULKING
CORR CORRIDOR
CT CERAMIC TILE
CTSK COUNTERSUNK

DF DRINKING FOUNTAIN
DISP DISPENSER
DO DOOR OPENING
DR DOOR
DS DOWNSPOUT
DSP DRY STANDPIPE

ENCL ENCLOSURE
ESCL ESCALATOR
EXPD EXPOSED
ESEW EMERGENCY SHOWER/
EYE WASH

FA FIRE ALARM
FACP FIRE ALARM CONTROL PANEL
FCO FLOOR CLEAN OUT
FD FLOOR DRAIN
FDC FIRE DEPARTMENT
CONNECTION
FE FIRE EXTINGUISHER
FH FIRE HYDRANT
FHC FIRE HOSE CABINET
FLR FLOOR
FLUOR FLUORESCENT
FOF FACE OF FINISH
FOS FACE OF STUDS
FPRF FIREPROOF
FSK FLOOR SINK
FUR FURRING

GL GLASS
GYP GYPSUM
GYPBD GYPSUM BOARD

HDWE HARDWARE
HM HOLLOW METAL

INCAND INCANDESCENT

JAN JANITOR

LAM LAMINATE
LAV LAVATORY
LKR LOCKER

MO MASONRY OPENING
MSK MOP SINK
MTD MOUNTED
MUL MULLION

OFD OVERFLOW DRAIN

PC PRECAST CONCRETE
PCC PORTLAND CEMENT CONCRETE
PLAM PLASTIC LAMINATE
PLAS PLASTER
PLYWD PLYWOOD
PTD PAPER TOWEL DISPENSER

RB RESILIENT BASE
RD ROOF DRAIN
RESIL RESILIENT
RM ROOM
RWL RAIN WATER LEADER

SC SOLID CORE
SCD SEAT COVER DISPENSER
SD SMOKE DETECTOR
SDT STATIC DISSIPATE TILE FLOOR
SND SANITARY NAPKIN DISPENSER
SNR SANITARY NAPKIN RECEPTACLE
SPKR SPEAKER
SSK SERVICE SINK
STOR STORAGE
SUSP SUSPENDED

TPD TOILET PAPER DISPENSER

UNF UNFINISHED
UR URINAL

VCT VINYL COMPOSITION TILE
VEST VESTIBULE

WC WATER CLOSET
WD WOOD
WSP WET STAND PIPE

ELECTRICAL

AC ALTERNATING CURRENT
AF AMPERE FUSE
AFR AMPERE FRAME
AGC AUTOMATIC GAIN CONTROL
AMP AMPERE
ANN ANNUCIATOR
AS AMPERE SENSOR
ASW AMPERE SWITCH
AUX AUXILIARY
ASSY ASSEMBLY
AT AMPERE TRIP
ATS AUTOMATIC TRANSFER
SWITCH
AVI AUTOMATIC VEHICLE
IDENTIFICATION

BC BARE COPPER
BCW BARE COPPER WIRE
BAT BATTERY
BKR BREAKER

CBKR CIRCUIT BREAKER
CCD CHARGE COUPLED DEVICE
CGB CHASSIS GROUNDING BUS-BAR
CIRCUIT
CLF CURRENT LIMITING FUSE
CONDUIT ONLY
COMM COMMUNICATIONS
COND CONDUCTOR
CNTL CONTROL
CP CONTROL PANEL
CPT CONTROL POWER TRANSFER
C/R CONTACT RAIL
CR CONTROL RELAY
CRI COLOR RENDENING INDEX
CRS PVC COATED RIGID
STEEL CONDUIT
COMMUNICATION SHELTER
CURRENT TRANSFORMER
COMPUTER TERMINAL BOARD
COPPER

DIM DIMMER
DC DIRECT CURRENT
DISC DISCONNECT
DP DISTRIBUTION PANEL
DSP DIGITAL SIGNAL PROCESSING

EMI ELECTROMAGNETIC INTERFACE
EMT ELECTRICAL METALLIC
TUBING
EPF EXPLOSION PROOF
ETM ELAPSED TIME METER

FC FRAMMING CHANNEL
FDR FEEDER
FS FLOW SWITCH
FVNR FULL VOLTAGE
NON-REVERSING

GFI GROUND FAULT INTERRUPTER
GRS GALVANIZED RIGID STEEL
GTS GROUND TEXT STATION

HID HIGH INTENSITY DISCHARGE
HOA HAND-OFF-AUTO SWITCH
HPS HIGH PRESSURE SODIUM
HV HIGH VOLTAGE

IC INTERRUPTING CAPACITY

KVA KILOVAR
KW KILOWATT

LED LIGHT EMITTING DIODE
LV LOW VOLTAGE
LS LIMIT SWITCH

MAG MAGNETIC
MC CONTACTOR COIL METALLIC
CONDUIT
MDP MAIN DISTRIBUTION PANEL
MGB MAIN GROUNDING BUSS-BAR
MS MOTOR STARTER
MT EMPTY CONDUIT

NF NON FUSED
NMC NONMETALLIC CONDUIT
NP NEMPLATE

P POWER
PC POWER CABLE
PCU POWER CONDITIONING UNIT
PE PHOTOELECTRIC
PEC PHOTOELECTRIC CELL
PH PHASE
POS POSITIVE
PT POTENTIAL TRANSFORMER

RES RESISTOR
RGS RIGID GALVANIZED STEEL
RPC REMOTE POWER CENTER
RSC RIGID STEEL CONDUIT

STC SUPERVISORY TERMINATION
CABINET
SV SOLENOID VALVE
SWBD SWITCHBOARD
SWGR SWITCHGEAR

TCK TIME CLOCK
TDR TIME DELAY RELAY
TGB TELECOMMUNICATIONS
GROUNDING BUSS-BAR
TH THERMOSTAT
TLK TWISTLOCK
TMGB TELCOMMUNICATIONS MAIN
GROUNDING BUSS-BAR
TMS THERMAL FIT MARKER SYSTEM

UH UNIT HEATER

V VOLT
VM VOLT METER
VPF VAPOR PROOF
VS VOLT METER SWITCH

W WATT
WHD WATT-HOUR DEMAND METER

XFMR TRANSFORMER

MECHANICAL

ASA ACOUSTICAL SOUND
ATTENUATOR
AC AIR COMPRESSOR
ACD ACCESS DOOR
ACU AIR CONDITIONING UNIT
AF AIR FILTER/AIR FOIL
AHU AIR HANDLING UNIT
AP ACCESS PANEL
APD AIR PRESSURE DROP
ASR AUTOMATIC SPRINKLER RISER

BD BALANCING DAMPER
BDD BACK DRAFT DAMPER
BFP BACKFLOW PREVENTER
BFV BUTTERFLY VALVE

CA COMPRESSED AIR
CC COOLING COIL
CEG CEILING EXHAUST GRILLE
CG CEILING GRILLE
COND CONDENSATE
CU CONDENSING UNIT
CV CHECK VALVE
CW COLD WATER
CWR CHILLED WATER RETURN
CWS CHILLED WATER SUPPLY

DB DRY BULB
DEG DUCT EXHAUST GRILLE
DX DIRECT EXPANSION

EA EXHAUST AIR
EAD EXHAUST AIR DAMPER
EAT ENTERING AIR TEMPERATURE
EF EXHAUST FAN
EFF EFFICIENCY
ESP EXTERNAL STATIC PRESSURE
EUH ELECTRIC UNIT HEATER
EXTR EXTRACTER

FC FORWARD CURVE
FCD FLOW CONTROL DEVICE
FLA FULL LOAD AMPERES
FLX FLEXIBLE
FMN FORCE MAIN

GPM GALLONS PER MINUTE
GR GRILLE
GV GATE VALVE

HC HEATING COIL
HD HEAD
HDN HOPPER DRAIN
HP HORSEPOWER/HEAT PUMP
HSC HOSE STORAGE CABINET
HVA HOSE VALVE, ANGLE
GLOBE TYPE
HVS HOSE VALVE, STRAIGHTWAY
GATE TYPE
HWR HOT WATER RETURN
HWS HOT WATER SUPPLY

IPS IRON PIPE SIZE
IW INDUSTRIAL WASTE

LAT LEAVING AIR TEMPERATURE
LCP LOCAL CONTROL PANEL
LR LONG RADIUS

MAV MANUAL AIR VENT
MCC MOTOR CONTROL CENTER
MCP MOTOR CONTROL PANEL
MD MOTOR OPERATED DAMPER

NC NORMALLY CLOSED
NO NORMALLY OPEN

OA OUTSIDE AIR
OAD OUTSIDE AIR DAMPER

PD PUMP DISCHARGE
PDN PLANTER DRAIN
PH PHASE
PIV POST INDICATOR VALVE
PRV PRESSURE REDUCING VALVE
PS POSITION SWITCH

RA RETURN AIR
RAD RETURN AIR DAMPER
RF RETURN FAN
RH RADIANT HEATER
RL REFRIGERANT LIQUID
RS REFRIGERANT SUCTION
RV ROOF VENTILATOR

SA SUPPLY AIR
SANT SANITARY
SAR SOUND ATTENUATOR
SCAC SELF CONTAINED AIR
CONDITIONER
SCHP SELF CONTAINED HEAT PUMP
SDP SPLITTER DAMPER
SF SUPPLY FAN
SPWG STATIC PRESSURE WATER
GAUGE
SP SUMP PUMP

T&P TEMPERATURE AND
PRESSURE RELIEF VALVE
TEMP TEMPERATURE
TG TRANSFER GRILLE
THR TOTAL HEAT REJECTION
TSP TOTAL STATIC PRESSURE
TV TURNING VANE

UC UNDER CUT
UH UNIT HEATER

VB VACUUM BREAKER
VD VOLUME DAMPER
VEL VELOCITY
VTR VENT THROUGH ROOF

WST WASTE
WB WET BULB
WCO WALL CLEAN OUT
WEG WALL EXHAUST GRILLE
WG WATER GAUGE
WH WATER HEATER
WHA WATER HAMMER ARRESTOR
WL WALL LOUVER
WSP WET STANDPIPE

REV.	DATE	DESCRIPTION	DES.	ENG.
B	04-13-20	REMOVED TS DEFINITION	AC	JMM
A	11-01-13	REVISED GENERAL ABBREVIATIONS	AC	NDP

DRAWN BY: A. CARLOS DATE: 06/08/07

PRINCIPAL ENGINEER, DESIGN & STANDARDS

ASSISTANT DIRECTOR, DESIGN

METROLINK

SOUTHERN CALIFORNIA REGIONAL RAIL AUTHORITY
900 WILSHIRE BLVD., SUITE 1500, L. A., CA. 90017

ENGINEERING STANDARDS

GENERAL ABBREVIATIONS
ARCHTTECTURAL & ENGINEERING

STANDARD	1103
SCALE:	NTS
REVISION SHEET	B 1 OF 1
CADD FILE:	ES1103

GENERAL

QTY	QUANTITY
(R)	RELOCATED
R	RADIUS
RBM	RAIL BOUND MANGANESE
RC	REINFORCED CONCRETE
RCP	REINFORCED CONCRETE PIPE
RCTC	RIVERSIDE COUNTY TRANSPORTATION COMMISSION
RD	ROAD
RDWY	ROADWAY
RECT	RECTANGULAR
REF	REFERENCE
REINF	REINFORCED
REL	RELOCATE(D)
REQ'D	REQUIRED
REV	REVISION, REVISED
RH	RIGHT HAND
RO	ROUGH OPENING
RP	REFERENCE POINT
RR	RAILROAD
RT	RIGHT
RTE	ROUTE
RWIC	ROADWAY WORKER-IN-CHARGE
R/W, ROW	RIGHT OF WAY
S	SOUTH
SAE	SOCIETY OF AUTOMOBILE ENGINEER
SBCTA	SAN BERNARDINO COUNTY TRANSPORTATION AUTHORITY
SB	SOUTHBOUND
SCHD	SCHEDULE
SCRRA	SOUTHERN CALIFORNIA REGIONAL RAIL AUTHORITY
SD	STORM DRAIN
SDMH	STORM DRAIN MANHOLE
SDNG	SIDING
SECT	SECTION
SERV	SERVICE
SF	SQUARE FEET
SG	SUBGRADE
SHLDR	SHOULDER
SHT	SHEET
SIM	SIMILAR
SIN	SINE
SL	SLOPE
SLPA	SIGNAGE/LIGHTING/PUBLIC ADDRESS
SMC	SWIVEL MOVEABLE JOINT
S/N	SERIAL NUMBER
SPEC	SPECIFICATION
SQ	SQUARE
SS	SANITARY SEWER
SST	STAINLESS STEEL
ST	STREET
STA	STATION
STD	STANDARD
STIFF	STIFFENER
STL	STEEL
STR	STRAIGHT
STRL	STRUCTURAL
STRUCT	STRUCTURE
SW	SWITCH
SWK	SIDEWALK
SWL	SOUNDWALL
SY	SQUARE YARD(S)
SYMM	SYMMETRICAL

ABBREVIATIONS

T&B	TOP AND BOTTOM
TAN	TANGENT
TBD	TO BE DETERMINED
TBR	TO BE REMOVED
TC	TRACK CENTER
TD	TRENCH DRAIN
TDS	TRAIN DESTINATION SIGN
TEL	TELEPHONE
TF	TRACK FEET
THDS	THREADS
THK	THICKNESS
TK	TRACK
TL	TOE LENGTH
TO, T/O	TURNOUT
TOC	TOP OF CURB
TOG	TOP OF GRATE
TOL	TOLERANCE
TOP	TOP OF PAVEMENT
TOS	TOP OF SLOPE
TOT	TOP OF TIE
TOW	TOP OF WALL
T/R	TOP OF RAIL
TRANS	TRANSITION
TTB	TELEPHONE TERMINAL BOARD
TVD	TICKET VENDING DEVICE
(TYP)	TYPICAL
UB	UTILITY BOX
UD	UNDERDRAIN
UG	UNDERGROUND
UON	UNLESS OTHERWISE NOTED
UP	UNDERPASS
UPRR	UNION PACIFIC RAILROAD
UR	UNIFORM RISER
UTIL	UTILITY
VAR	VARIES
VCTC	VENTURA COUNTY TRANSPORTATION COMMISSION
VERT	VERTICAL
VMB	VISUAL MESSAGE BOARD
VMS	VISUAL MESSAGE SIGN
W	WEST
W/	WITH
W/O	WITHOUT
WB	WESTBOUND
WI	WROUGHT IRON
WP	WORK POINT
WPF	WATERPROOF
WRT	WITH RESPECT TO
WSM	WELDED SPRING MANGANESE
WT	WEIGHT
WWF	WELDED WIRE FABRIC
WWM	WELDED WIRE MESH
XING	CROSSING
XOVER, X/O	CROSSOVER
YD	YARD(S)
•20POTO RH	NUMBER 20 POWER OPERATED TURNOUT - RIGHT HAND
•10HOTO LH	NUMBER 10 HAND OPERATED TURNOUT - LEFT HAND
+/-, ±	PLUS OR MINUS, APPROXIMATELY

REV.	DATE	DESCRIPTION	DES.	ENG.
A	10-02-20	REVISED ABBREVIATIONS	AC	JMM

DRAWN BY: DATE: 03/31/2011
 PRINCIPAL ENGINEER, DESIGN & STANDARDS
 ASSISTANT DIRECTOR, DESIGN

METROLINK
 SOUTHERN CALIFORNIA REGIONAL RAIL AUTHORITY
 900 WILSHIRE BLVD., SUITE 1500, L. A., CA. 90017

ENGINEERING STANDARDS	
STANDARD ABBREVIATIONS	

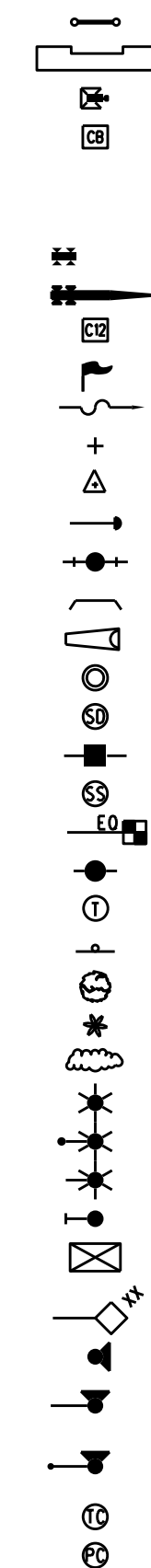
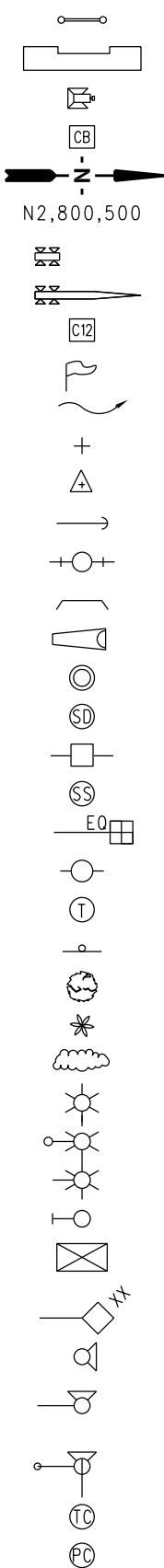
STANDARD	1201
SCALE:	NONE
REVISION SHEET	A 2 OF 4
CADD FILE:	ES1201-02

DESCRIPTION

EXISTING

PROPOSED

- BILLBOARD
- BUILDING
- BUMPER
- CATCH BASIN
- NORTH ARROW
- COORDINATE
- *FLASHERS
- *CROSSING GATE & FLASHERS
- CURVE NUMBER
- FLAG POLE
- FLOW
- GRID TICK
- GROUND CONTROL POINT (AERIAL)
- GUY WIRE
- HYDRANT
- HEADWALL
- FLARED END SECTION
- MANHOLE
- STORM DRAIN MANHOLE
- POWER POLE
- SANITARY SEWER MANHOLE
- STATION EQUALITY
- TELEPHONE POLE
- TELEPHONE MANHOLE
- SIGN
- TREE
- PALM TREE
- TREE LINE, SHRUBBERY
- POLE-MOUNTED LUMINAIRE
- ELECTROLIER WITH POLE
- ELECTROLIER WITHOUT POLE
- RAILROAD SIGNAL
- SIGNAL HOUSE
- RAILROAD MILEPOST
- TRAFFIC SIGNAL
- TRAFFIC SIGNAL WITH ARM ONLY
- TRAFFIC SIGNAL WITH ARM AND POLE
- TIME CLOCK
- PHOTOELECTRIC CELL

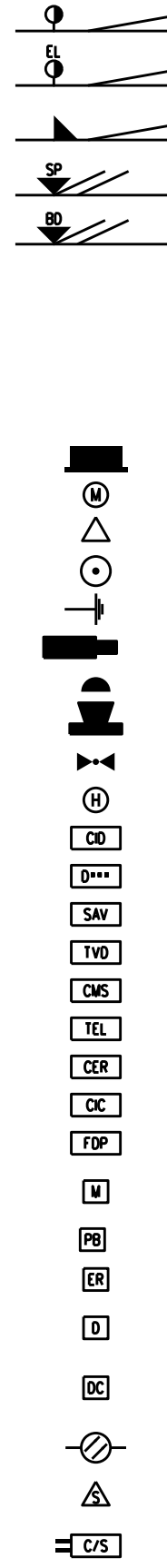
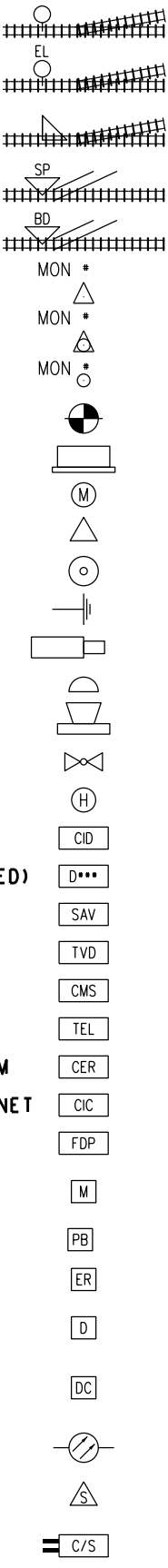


DESCRIPTION

EXISTING

PROPOSED

- POINT OF SWITCH (HAND-THROW TURNOUT)
- POINT OF SWITCH (HAND THROW TURNOUT WITH ELECTRIC LOCK)
- POINT OF SWITCH (POWER-OPERATED TURNOUT)
- SWITCH POINT DERAIL
- BI-DIRECTIONAL DERAIL
- HORIZONTAL CONTROL POINT
- HORIZONTAL AND VERTICAL CONTROL POINT
- VERTICAL CONTROL POINT
- BENCHMARK
- STAIRWAY OR RAMP FLOODLIGHT
- UTILITY METER
- TRANSFORMER
- GROUNDING ROD
- GROUND
- CCTV CAMERA
- MICROPHONE
- SPEAKER
- DUAL SPEAKER
- HANDHOLE
- CARD INTERFACE DEVICE
- DISTRIBUTION CABINET (ATTRIBUTED)
- STAND ALONE VALIDATOR
- TICKET VENDING DEVICE
- CHANGEABLE MESSAGE SIGN
- PUBLIC TELEPHONE
- COMMUNICATIONS EQUIPMENT ROOM
- COMMUNICATIONS INTERFACE CABINET
- FIBER DISTRIBUTION PANEL
- NOISE SENSING MICROPHONE (SURFACE MOUNTED)
- PULL BOX
- EQUIPMENT ROOM
- SUBSYSTEM DEVICE (TVM, VMS, OR CCTV)
- DISTRIBUTION CABINET (INTERMEDIATE CROSS-CONNECT)
- SINGLE MODE OR MULTIMODE FIBER OPTIC CABLE
- 8 OHM EXTERIOR HORN SPEAKER
- SM FIBER TO COPPER MEDIA CONVERTER/SWITCH DUAL TX/RX

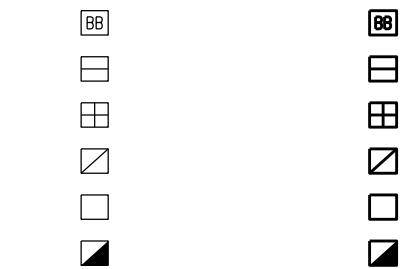


DESCRIPTION

EXISTING

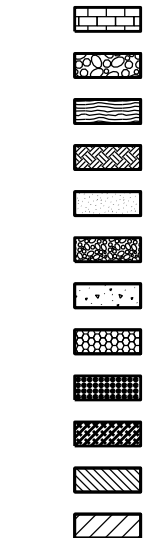
PROPOSED

- BATTERY BOX
- CCTV, SECURITY MANHOLE
- TELEVISION MANHOLE
- ELECTRIC MANHOLE
- WATER VALVE BOX
- TRAFFIC CONTROL BOX

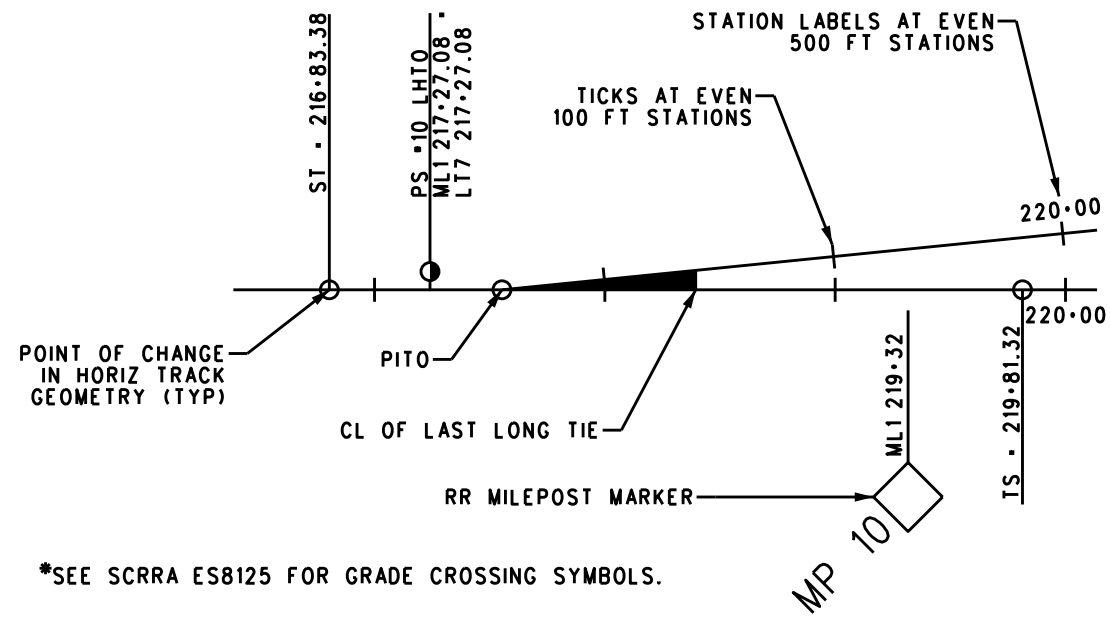


PATTERNS

- STONE/BRICK PAVING
- BALLAST
- TIMBER
- SUBGRADE, EARTH
- SUBBALLAST
- AGGREGATE BASE
- CONCRETE
- PEDESTRIAN CROSSING PANEL
- TACTILE WARNING TILES
- GRADED/LANDSCAPED AREA
- GRADE CROSSING PANELS
- HOT MIX ASPHALT CONCRETE



TYPICAL ILLUSTRATION OF TRACK AND TURNOUT



*SEE SCRRR ES8125 FOR GRADE CROSSING SYMBOLS.

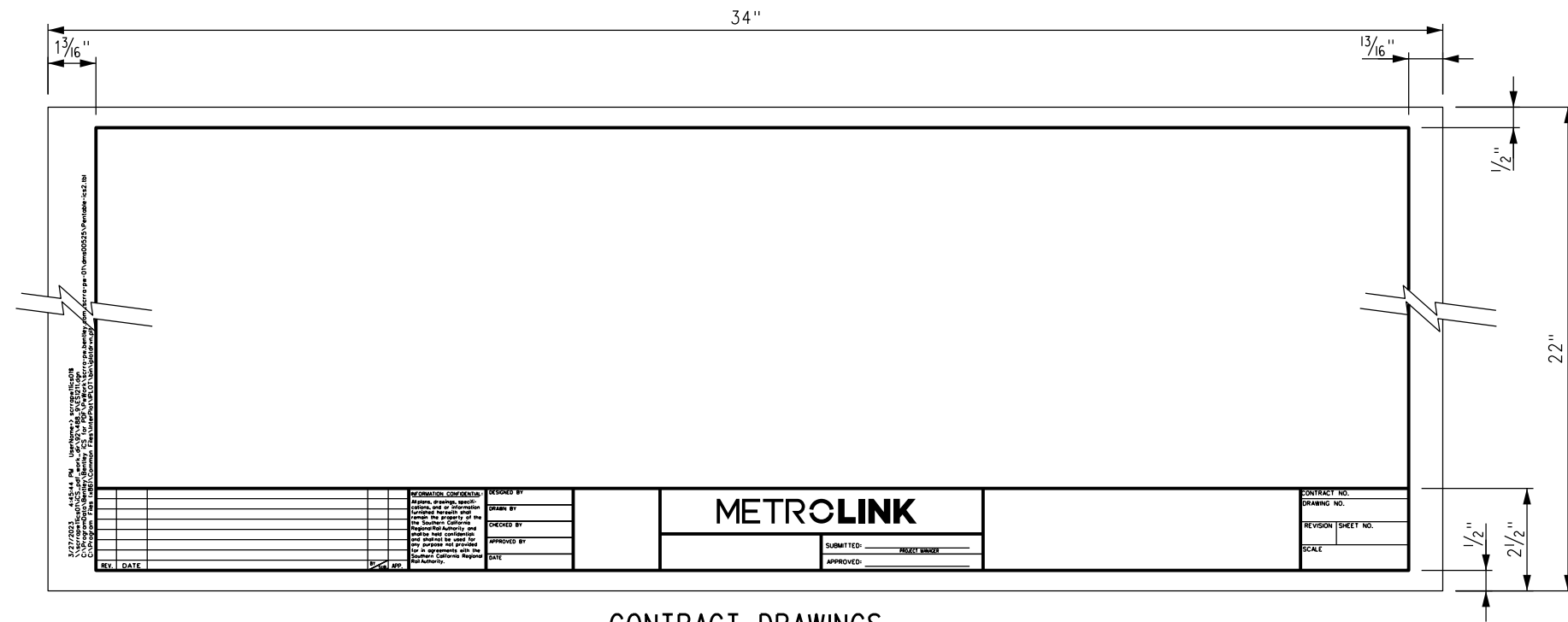
REV.	DATE	DESCRIPTION	DES.	ENG.
A	10-02-20	REVISED ABBREVIATIONS	AC	JMM

SCRRR ENGINEERING STANDARDS ARE INTENDED FOR SCRRR APPROVED USES ONLY. FOR NON-SCRRR APPROVED USES, SCRRR SHALL NOT BE RESPONSIBLE FOR THE ACCURACY OR COMPLETENESS OF THE DATA OR INFORMATION CONTAINED HEREIN. THE SELECTION AND USE OF THESE STANDARDS IS THE SOLE RESPONSIBILITY OF THE USER AND SHOULD NOT BE USED WITHOUT CONSULTING A REGISTERED PROFESSIONAL ENGINEER. ALL WARRANTIES AND REPRESENTATIONS OF ANY KIND ARE DISCLAIMED. ANYONE MAKING USE OF THIS INFORMATION AGREES THAT IT ASSUMES ALL LIABILITY ARISING FROM SUCH USE. NO PART OF THESE STANDARDS SHOULD BE REPRODUCED OR DISTRIBUTED IN ANY FORM OR BY ANY MEANS WITHOUT THE PRIOR WRITTEN PERMISSION OF SCRRR. ALL RIGHTS RESERVED.

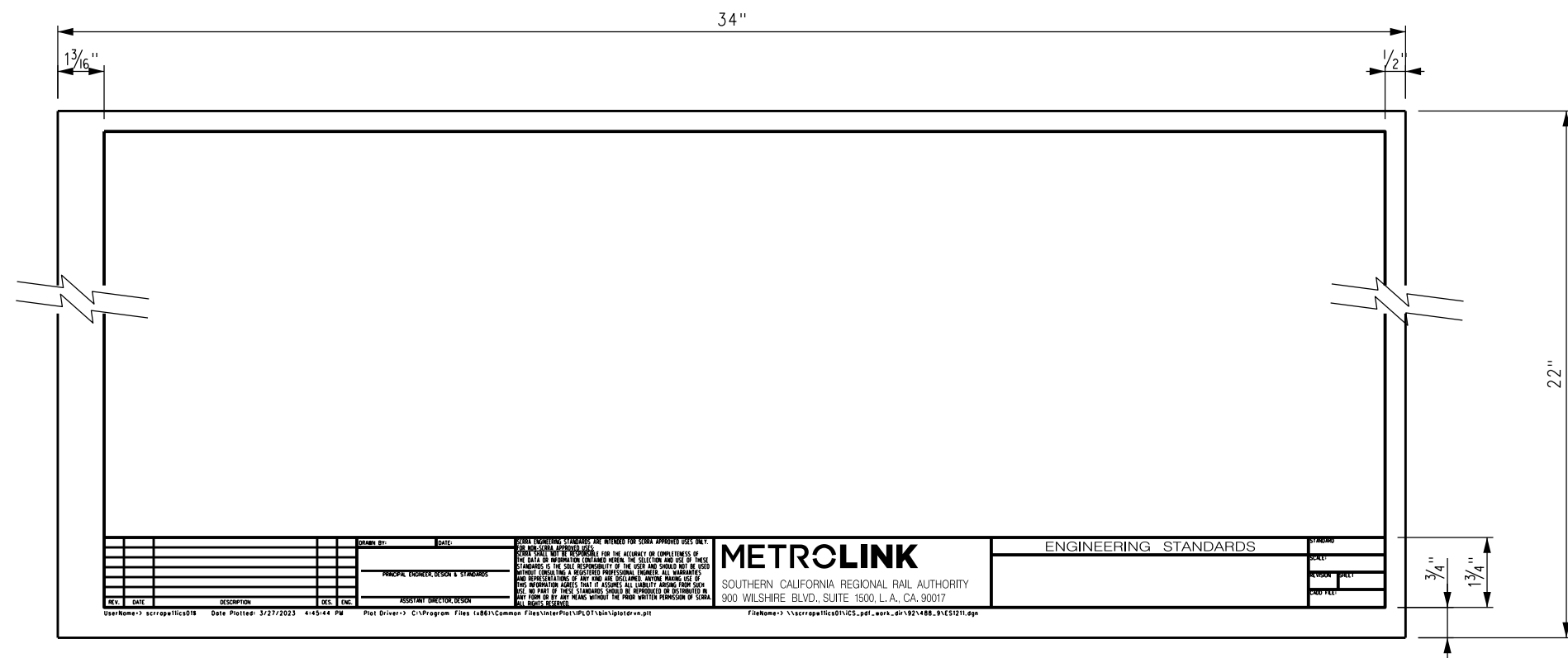
METROLINK
 SOUTHERN CALIFORNIA REGIONAL RAIL AUTHORITY
 900 WILSHIRE BLVD., SUITE 1500, L. A., CA. 90017

ENGINEERING STANDARDS	
STANDARD SYMBOLS AND PATTERNS	

STANDARD	1201
SCALE	NONE
REVISION SHEET	A 3 OF 4
CADD FILE	ES1201-03



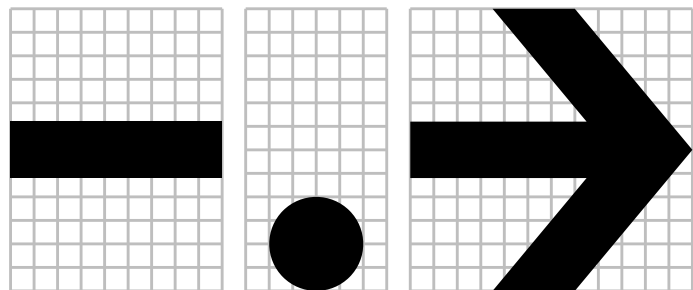
CONTRACT DRAWINGS



ENGINEERING STANDARD DRAWINGS

<table border="1"> <tr> <td>REV.</td> <td>DATE</td> <td>DESCRIPTION</td> <td>DES.</td> <td>ENG.</td> </tr> <tr> <td>A</td> <td>11-16-16</td> <td>REVISED CONTRACT DRAWING BORDER</td> <td>AC</td> <td>NDP</td> </tr> </table>		REV.	DATE	DESCRIPTION	DES.	ENG.	A	11-16-16	REVISED CONTRACT DRAWING BORDER	AC	NDP	DRAWN BY: A. CARLOS DATE: 04/12/02 PRINCIPAL ENGINEER, DESIGN & STANDARDS ASSISTANT DIRECTOR, DESIGN	SCRRRA ENGINEERING STANDARDS ARE INTENDED FOR SCRRRA APPROVED USES ONLY. FOR NON-SCRRRA APPROVED USES, SCRRRA SHALL NOT BE RESPONSIBLE FOR THE ACCURACY OR COMPLETENESS OF THE DATA OR INFORMATION CONTAINED HEREIN. THE SELECTION AND USE OF THESE STANDARDS IS THE SOLE RESPONSIBILITY OF THE USER AND SHOULD NOT BE USED WITHOUT CONSULTING A REGISTERED PROFESSIONAL ENGINEER. ALL WARRANTIES AND REPRESENTATIONS OF ANY KIND ARE DISCLAIMED. ANYONE MAKING USE OF THIS INFORMATION AGREES THAT IT ASSUMES ALL LIABILITY ARISING FROM SUCH USE. NO PART OF THESE STANDARDS SHOULD BE REPRODUCED OR DISTRIBUTED IN ANY FORM OR BY ANY MEANS WITHOUT THE PRIOR WRITTEN PERMISSION OF SCRRRA. ALL RIGHTS RESERVED.	<h1>METROLINK</h1> SOUTHERN CALIFORNIA REGIONAL RAIL AUTHORITY 900 WILSHIRE BLVD., SUITE 1500, L. A., CA. 90017	ENGINEERING STANDARDS STANDARD TITLE BLOCKS	STANDARD 1211 SCALE: NONE REVISION SHEET A 1 OF 1 CADD FILE: ES1211
REV.	DATE	DESCRIPTION	DES.	ENG.												
A	11-16-16	REVISED CONTRACT DRAWING BORDER	AC	NDP												

1 2 3 4 5 6 7 8 9 0
 A B C D E F G H I J
 K L M N O P Q R S T
 U V W X Y Z & @



TEXT HEIGHT
 TEXT HEIGHT x 1/2
 TEXT HEIGHT
 TEXT HEIGHT x 1.5

**TEXT
 SPACING**

UNRELATED LINE

NOTES:

1. "ARIAL BOLD" LETTERS AND NUMERALS SHALL BE USED ON ALL SIGNS UNLESS OTHERWISE SPECIFIED ON SIGN STANDARD.
2. LETTERS AND NUMERALS MAY BE MADE PROPORTIONALLY NARROWER THAN ILLUSTRATED IF NEEDED TO FIT AVAILABLE SPACE ON THE SIGN. HEIGHT SHALL NOT BE ADJUSTED.
3. ALL LETTERS AND NUMERALS SHALL BE AVERY DENNISON OR 3M BLACK.
4. USE TEXT SPACING PATTERN ON THIS SHEET UNLESS OTHERWISE SPECIFIED ON SIGN STANDARD.

REV.	DATE	DESCRIPTION	DES.	ENG.
B	09-25-20	REVISED NOTES, NUMBER 1 & ADDED LETTER "I"	AC	JMM
A	03-22-13	REVISED NOTE 3	AC	NDP

DRAWN BY: A. CARLOS DATE: 04/12/02

 PRINCIPAL ENGINEER, DESIGN & STANDARDS

 ASSISTANT DIRECTOR, DESIGN

SCRR ENGINEERING STANDARDS ARE INTENDED FOR SCRR APPROVED USES ONLY.
 FOR NON-SCRR APPROVED USES:
 SCRR SHALL NOT BE RESPONSIBLE FOR THE ACCURACY OR COMPLETENESS OF THE DATA OR INFORMATION CONTAINED HEREIN. THE SELECTION AND USE OF THESE STANDARDS IS THE SOLE RESPONSIBILITY OF THE USER AND SHOULD NOT BE USED WITHOUT CONSULTING A REGISTERED PROFESSIONAL ENGINEER. ALL WARRANTIES AND REPRESENTATIONS OF ANY KIND ARE DISCLAIMED. ANYONE MAKING USE OF THIS INFORMATION AGREES THAT IT ASSUMES ALL LIABILITY ARISING FROM SUCH USE. NO PART OF THESE STANDARDS SHOULD BE REPRODUCED OR DISTRIBUTED IN ANY FORM OR BY ANY MEANS WITHOUT THE PRIOR WRITTEN PERMISSION OF SCRR. ALL RIGHTS RESERVED.

METROLINK
 SOUTHERN CALIFORNIA REGIONAL RAIL AUTHORITY
 900 WILSHIRE BLVD., SUITE 1500, L. A., CA. 90017

ENGINEERING STANDARDS
 LETTERING FOR SIGNS

STANDARD 1212
 SCALE: NONE
 REVISION SHEET B 1 OF 1
 CADD FILE: ES1212