



NOTICE TO POMONA NORTH STATION USERS: Temporary Parking Lot Changes JANUARY 1 - JANUARY 31, 2025 (CITY OF POMONA)

CONSTRUCTION ACTIVITY

As part of the 9.1-mile Foothill Gold Line light rail project, crews will reopen the Santa Fe St. Pomona North Metrolink parking entrance. Crews will keep the eastern portion of the parking lot closed to complete the striping and landscaping of the center and eastern areas for approximately one month. The western portion of the parking lot and the Fulton Rd. entrance will remain open and accessible for all riders. The available parking will continue to provide approximately 152 standard spaces and 6 handicap spaces. Both the Fulton Rd. entrance and the Santa Fe St. entrance will remain open to vehicular and pedestrian traffic thru the final phases of construction.

WHEN

Beginning Wednesday, January 1st, thru Friday, January 31st, 2025

- Work Hours: 7:00 AM - 8:00 PM, Monday thru Saturday. NOTE: Occasional longer work hours and construction on Sundays may be performed during the period.

WHERE

Construction activities will continue to take place within the parking area shown below in red - on the eastern side of the Metrolink parking lot. Parking will open and available on the western side of the lot, accessible from both the Fulton Rd. entrance and the Santa Fe St. entrance.

TRAFFIC ADVISORIES

Vehicles accessing the Pomona North station and parking can access using either the Fulton Rd. entrance from northbound Fulton Rd. or the Santa Fe St. entrance via Pine St. Pedestrian access will remain available at both entrances.

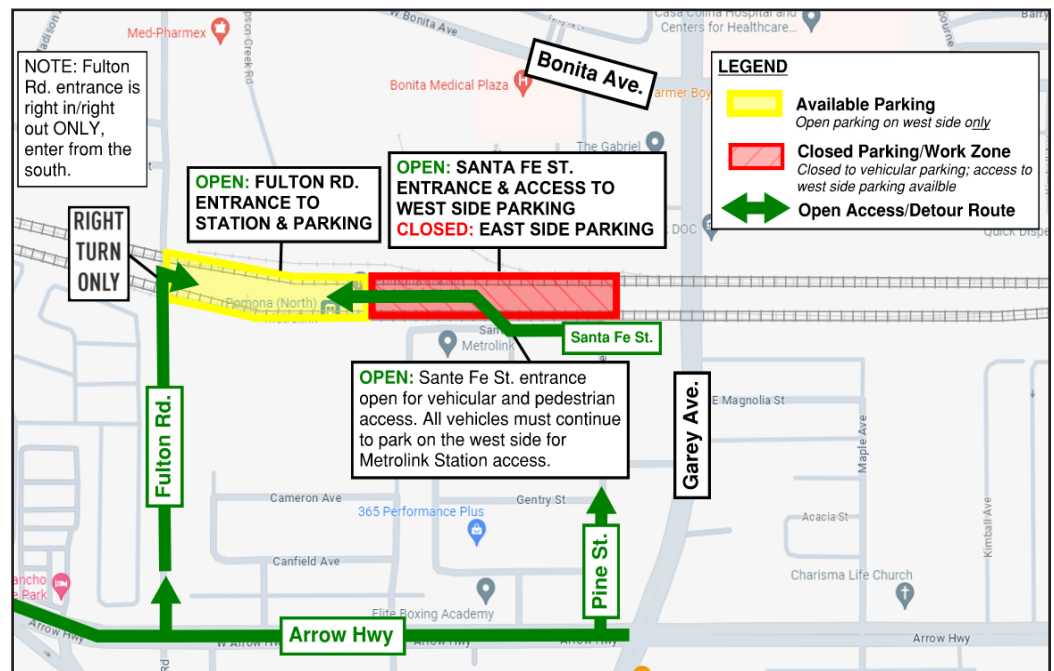
NOTE TO PARKING LOT USERS

Typical noise from construction equipment will be produced near the active work zones, including the use of trucks and light plants. Large equipment and deliveries will be coming and going from the work zones regularly.

STAY SAFE

Please obey all posted construction signs and do not enter the construction work zone.

Para información en español por favor llame o envíe un mensaje de texto a (626) 513-5788.



QUESTIONS?

Project Construction Questions Hotline: (626) 513-5788 **Email:** CommunityRelations@Kiewit-Parsons.com

General Project Questions: (626) 471-9050 **Email:** PublicAffairs@Foothillgoldline.org

Stay ahead of construction, sign up for alerts: www.foothillgoldline.org

**Construction schedules are subject to change for various reasons, including, but not limited to, weather conditions and unforeseen delays.*