



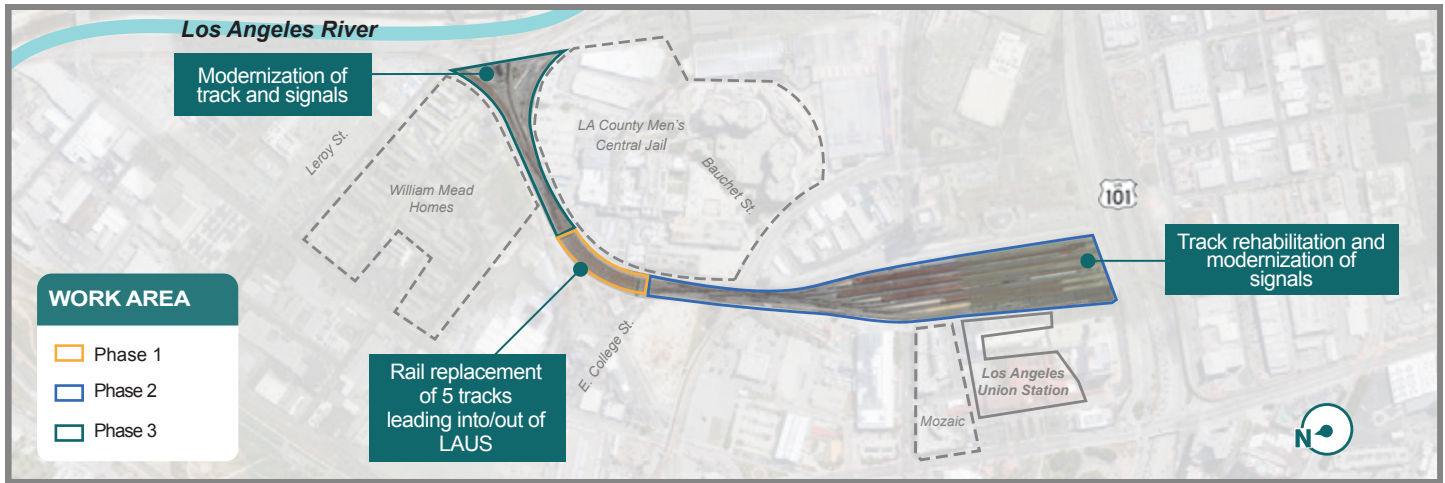
# Rail Modernization @Union Station

## Fact Sheet

### PROJECT DESCRIPTION

Metrolink’s Rail Modernization @Union Station project includes replacing railroad tracks, switches and upgrading the signal system which controls train movements. It will also support the local economy by generating approximately 1,300 jobs.

Los Angeles Union Station (LAUS) was originally built in 1939 and since then Metrolink has maintained the railroad track with minor improvements. However, this project is a major rehabilitation and modernization of this critical railroad infrastructure that will allow us to continue providing safe service, while building the rail system of the future.



The Rail Modernization @Union Station project is split into three phases. In **Phase 1**, rehabilitation work includes replacing worn rail in the five (5) railroad tracks going into and out of LAUS, this work will begin in September 2020. **Phase 2** will include the replacement of platform tracks at Union Station starting early 2021. The signal system will be modernized going into 2022. **Phase 3** will include modernization of the tracks, signals and components. This will take place in 2022.

All of these improvements are needed to maintain safe and reliable service and to allow for the efficient movement of trains into the future. The entire project is currently planned to be completed in June 2022.

### PROJECT BENEFITS

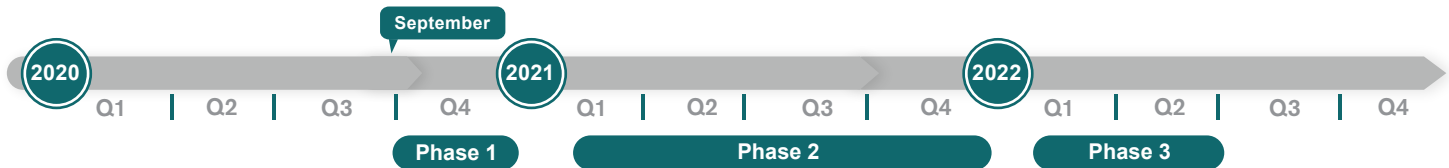


**Continued safe, reliable service** by replacing aging and outdated track, switch and signal infrastructure with a modern and resilient system that will bring the existing track to current Metrolink standards.



The modernized signal system will use advanced technology that will allow the **smooth operation of future train service**.

### PROJECT TIMELINE





# Rail Modernization @Union Station

## Frequently Asked Questions (FAQs)

### 1 Where is this work being done?

This work will be done along the railroad tracks between Los Angeles Union Station (LAUS) and Los Angeles River.

### 2 Why is this project needed?

LAUS was originally built in 1939 and much of the existing railroad tracks have not been replaced. However, this project is a major rehabilitation and modernization of this critical railroad infrastructure that will allow us to continue providing safe service, while building the rail system of the future.

### 3 Why is the work being done at night?

Because passenger trains use these railroad tracks during the day, much of this work will occur at night. However, disruptions to the community will not be continuous during the project. We will notify the community in advance when more involved work that may result in disruption will occur.

### 4 How long is the project?

The project will begin in September 2020 and is currently planned to be completed by June 2022.

### 5 What will the community experience during this work?

The community may notice construction activities in the form of construction equipment, sounds, vibration and dust from construction activities and lights from light towers. Please know our team is working to minimize any disruption to the adjacent communities and businesses. We apologize in advance for any inconvenience this may cause.

### 6 Who can I call if I have questions or complaints?

If you have any questions or complaints, please call Sylvia Novoa, Community Relations Manager (Se habla español) at 213-452-0300 or Laurene Lopez, Public Affairs Manager at 213-452-0433.

### 7 Who is Metrolink?

Metrolink is Southern California's commuter rail service enabling people to connect to their jobs and explore all that the region has to offer. Every year, Metrolink has nearly 12 million boardings from people who ditch their cars to avoid gridlock, removing an estimated 9.3 million vehicles from the roads and reducing greenhouse gas emissions by 130,000 metric tons. Metrolink is the largest commuter rail agency in California and the third largest in the United States operating seven lines along a 538-mile network that travels across Los Angeles, Orange, Riverside, San Bernardino and Ventura counties.

### 8 Where can I get more information about this project?

If you are interested in receiving project email updates, please sign up by visiting our project webpage located at [metrolinktrains.com/railmodernization](http://metrolinktrains.com/railmodernization).

### 9 What are the benefits to the community?

Aside from enabling Metrolink to provide safe public transportation, this project will generate 1,300 jobs.