



## Kings "Lucky Charm" Ticket Pack

What luck! The L.A. Kings, Metrolink, and San Bernardino Associated Governments (SANBAG) have teamed up to bring Inland Empire hockey fans a St. Patrick's Day offer they won't want to miss. On Saturday, March 17, the L.A. Kings take on the Columbus Blue Jackets, and you can enjoy it all with "Lucky Charm" ticket packs. Packs are \$25, \$45, and \$75 each, and include a Kings game ticket, a round-trip Metrolink ticket, a hot dog, and a beverage. Plus, Metrolink special event staff will direct fans from the train to the game.

Don't miss the action at Staples Center or the fun aboard the Metrolink-Kings game train! The designated fan train (#369) will depart San Bernardino at 4:10 p.m. and stop at every station on the line. There will be special activities and giveaways aboard this regular-service train. Join in on the fun and excitement, and share this special experience with your fellow fans.

One more lucky bonus: to help everyone get into the spirit of St. Patrick's Day, all game attendees will receive a commemorative green Kings cap sponsored by SANBAG and Metrolink!

When you take advantage of this value-priced ticket package, you'll not only save yourself some green, but also eliminate the hassle of driving in traffic. Your special train ticket will get you to the game and back with no parking fees!

For more information, or to purchase "Lucky Charm" packages, call (213) 763-4664, or visit [www.lakings.com](http://www.lakings.com) and click "tickets," then "ticket deals." A per-ticket service fee will apply. This offer ends March 5, 2007. See you at the game!



Governments  
**SANBAG**  
Working Together



Metrolink's newly added late-night Saturday train on the San Bernardino Line will let you make the most of your Saturday nights and experience all the fun that L.A. has to offer. Whether it's catching a Kings hockey game at Staples Center, watching a play at the L.A. Music Center, or having dinner out on the town, the Saturday late-night train (#376) departing Union Station at 11:30 p.m. can let you enjoy your night and have a relaxing ride home without driving.

To find out more about the San Bernardino Line schedules and the new Saturday late-night train, call (800) 371-LINK (5465) or visit [www.metrolinktrains.com](http://www.metrolinktrains.com).

## Metrolink Service Alert

As part of the ongoing improvements to Metrolink tracks in Santa Ana, Metrolink Orange County and Inland Empire-Orange County weekend service will be experiencing a service interruption on Saturday, February 17 and Sunday, February 18 between Orange and Santa Ana. During this time, buses will be shuttling passengers between these two stations. At each station, passengers will be able to reboard trains and continue on to their final destinations.

Southbound trains from Los Angeles or San Bernardino will travel only as far as Orange. Northbound trains from Oceanside bound for either Los Angeles or San Bernardino will travel only as far as Santa Ana. In both cases, buses will be waiting to "bridge" the gap between the two stations with a short ride.

For more information, please visit the Metrolink website at [www.metrolinktrains.com](http://www.metrolinktrains.com) or call (800) 371-LINK (5465).



## Celebrate Chinese New Year in Irvine

Make plans now to celebrate the Lunar New Year at the Irvine Transportation Center, Saturday, February 24, 2007, starting at 8:30 a.m. Bring the family—enjoy the live Lion Dance, free food (sponsored by Lee's Sandwiches) and free parking.

After the event, you can continue your Lunar New Year celebration by riding Metrolink to the Chinese New Year Celebration in Los Angeles. Take the whole family—up to three children ages 5 and under ride FREE with purchase of each adult Metrolink Weekends ticket. All Metrolink Weekends tickets are good for free transfer on Gold Line trains to Chinatown.

Metrolink Orange County commuter rail service is brought to you by Measure M, the half-cent transportation sales tax approved by voters in 1990. Get a free Metrolink Weekends Fun Guide packed with places to go, things to do and special discounts by visiting [www.octa.net/myadventure](http://www.octa.net/myadventure) today.

The Irvine Transportation Center is located at 15215 Barranca Parkway, Irvine, CA 92618.

For more information about Metrolink Orange County Weekend Service, please visit [www.metrolinktrains.com](http://www.metrolinktrains.com) or call (800) 371-LINK (5465).



豬年  
YEAR OF PIG 2007



**Metrolink**  
Opening the doors to new adventures  
**Weekends**



## Amtrak Weekend Escape

Good news for ALL Metrolink monthly-pass holders: Amtrak is offering FREE weekend rides to all destination stops north of L.A. Union Station along the Pacific Surfliner corridor. ALL Metrolink monthly-pass holders are eligible to ride Pacific Surfliner trains between Los Angeles and San Luis Obispo on Fridays, Saturdays, and Sundays from February 2 to April 29. **Blackout dates are February 16 to 19.**

Take advantage of this free offer and use your Metrolink monthly pass as your passport to your weekend escape! Weekend train service on the San Bernardino and Orange County lines can connect you to L.A. Union Station, where you can catch a Pacific Surfliner train bound for exciting destinations such as Santa Barbara, Solvang, San Luis Obispo, and more!

And San Bernardino and Orange County line monthly-pass holders get an added bonus—use your pass on weekends, regardless of station pairs, all the way to Los Angeles to connect with Amtrak Pacific Surfliner trains.

## Multi-Line Ticket Option

Some Metrolink tickets and Monthly Passes can be used on more than one line. This gives passengers who live or work near stations on two different lines more trains to choose from. Monthly passes and tickets on the San Bernardino and Riverside Lines can be used for travel on either line (between stations of equal or lesser distance). Monthly Passes and tickets on the Riverside, 91 and Inland Empire – Orange County Lines can be used for travel on any of the three lines (also between stations of equal or lesser distance, as long as the origin station or the destination station is in Riverside or San Bernardino County). Ticket interchanges across other line pairs are not acceptable. It has come to our attention that some passengers are attempting to use 91/IEOC Line tickets on the San Bernardino Line; these lines do not share a reciprocity arrangement, and tickets on these lines are not interchangeable. If you need help determining your ticket interchangeability, call Metrolink at (800) 371-LINK (5465).





## Returns

Riders taking a weekend escape to Santa Barbara can receive discounts on lodging, restaurants, and activities through the Santa Barbara Car Free project, which promotes car-free transportation for cleaner

air. Save an extra 20 percent when you purchase a ticket for travel on the Amtrak Pacific Surfliner (plus associated thruway coaches) to/from all nine Amtrak stations in Santa Barbara County: Santa Barbara, Goleta, Carpinteria, Solvang, Buellton, Lompoc, Surf, Guadalupe, and Santa Maria!

Visit [www.santabarbaracarfree.org/traindiscount.htm](http://www.santabarbaracarfree.org/traindiscount.htm) for more information and to obtain the code for the 20 percent discount. And visit [www.railtorail.org](http://www.railtorail.org) for more information on the Weekend Escape promotion.



## Safety Matters

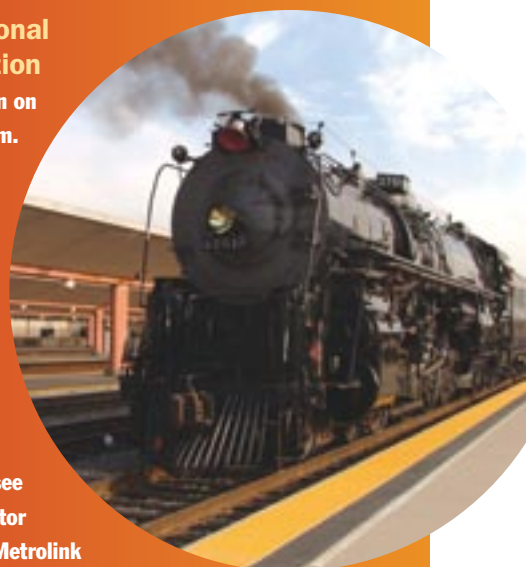
You do it every day. Waiting on the station platform waiting to begin your morning or afternoon commute. The whole routine can get so familiar that you might become complacent, so Metrolink would like to remind you to please heighten your awareness of your surroundings. With the technology available to us today, we are likely using our time on the platform to make a phone call or listen to music. For your safety, please remove your headphones or lower the volume so that you can hear the train as it approaches the station or any announcements that may be made. Also, always stand behind the line or tactile strip on the platform while waiting for your train.

### All Aboard for Educational Program at Union Station

Mark your calendars for fun on February 11, 2007, from 12 p.m. to 5 p.m. You are invited to a Rail Safety and Commuter Education Fair on February 11, 2007. The fair, which will be open from noon to 5 p.m. will feature an actual Steam Locomotive, #3751, which has been seen in movies such as "Tough Guys" and "Pearl Harbor". You will also see the Metro "Experience" simulator as well as exhibits by Amtrak, Metrolink and Operation Lifesaver.

The Fair is open to the public and will be held at Los Angeles Union Station on the platform level farthest from the Metro Gold Line boarding area. Grade school students will travel to Union Station for a day of learning about rail safety, history and the continuing importance of trains in today's economy. For many students, this will be their first up-close encounter with trains.

The fair is part of an educational outreach program developed by the San Bernardino Railroad Historical Society (SBRHS).



## Quick Ticket

Spending too much time at one of our ticket vending machines (TVM)? You needn't be. Metrolink offers a convenient, streamlined ticket-purchase option for regular riders. It's called Quick Ticket.

The Quick Ticket option has been available at our TVMs for more than a year—so we know it's tried and true. It's a convenient way to purchase tickets via credit or debit card. If you've purchased a ticket via credit or debit card and want to buy a new one with the same origin and destination points, simply insert the card you used previously in any Metrolink TVM as your first step. You'll see a menu that lists your last three purchases. If you want to duplicate any of these trips, select it by pushing a single button. That's the only button push required for this transaction! (A typical TVM sale without Quick Ticket requires a minimum of four button pushes, which means extra time and multiple opportunities for mistakes.)

Quick Ticket is a simple tool that makes life easier for regular riders who have established any kind of usage pattern. It's available at every TVM in the Metrolink system.



## City News

**Los Angeles: *Star Wars: Where Science Meets Imagination* at the California Science Center, February 11, 2007, to April 29, 2007**

Could humanoid robots and vehicles that hover above ground become a reality? *Star Wars: Where Science Meets Imagination* explores the boundaries of fantasy and reality, revealing similarities between the thinking processes of scientists and filmmakers.

*Star Wars: Where Science Meets Imagination* is the first exhibit to display costumes and props from all six Star Wars films with real-world technologies. Also included are extensive video interviews with filmmakers, scientists, and engineers, and hands-on components, including two large engineering-design labs where visitors can build and test their own speeders and robots.

In total, the exhibit features over 100 *Star Wars* artifacts and real-world technologies, 17 videos, and 21 interactive elements. Original film-artifact highlights include models of the *Millennium Falcon*, Luke's landspeeder, and Queen Amidala's *Nubian Starship*. Some of the colorful costumes on display include those that adorned



Obi-Wan Kenobi, Anakin and Yoda from Coruscant, a snowtrooper from Hoth, and a Jawa.

Admission to the Science Center and Star Wars exhibit is free. However, a strong demand is anticipated. Priority admission will be extended to IMAX ticket purchasers and California Science Center members. All others will be admitted based on

availability and capacity. Admission to the exhibit, particularly during peak hours, cannot be guaranteed. For more detailed information and helpful tips for planning a visit, please go to [www.californiasciencecenter.org](http://www.californiasciencecenter.org). The Science Center and IMAX theater are located in historic Exposition Park, Los Angeles. The center is open daily from 10 a.m. to 5 p.m. except Thanksgiving, Christmas, and New Year's Day. Admission to Science Center exhibits is free. IMAX tickets range from \$4.75 for children (ages 4 to 12) to \$8 for adults. For recorded information on show times, call (213) 744-7400.



## Metrolink Means NASCAR Excitement

Going to the Auto Club 500 race at the California Speedway on Sunday, February 25, but want to avoid the traffic and hassle? Look no further than Metrolink! Specially chartered trains, funded by the San Bernardino Associated Governments (SANBAG), from Lancaster, Oxnard, and Oceanside will offer an easy, hassle-free ride to Fontana and the California Speedway. Train tickets are only \$25, and trains will arrive at the Speedway early enough for all the fun and depart one hour after the race.

Regular Metrolink San Bernardino Line trains will not make stops at the California Speedway on February 25; the Speedway stops will be made by three charter trains. Space is very limited, so get your tickets today.

If you are looking to get to the California Speedway on both Friday, February 23, and Saturday, February 24, selected Metrolink regular-service San Bernardino Line trains will make stops at the California Speedway on those days. You must buy a regular Metrolink round-trip ticket from the Ticket Vending Machine prior to boarding the train to the Speedway. Just select "Round-Trip Ticket" and choose "Fontana" as your destination. You will find Metrolink California Speedway Saturday and Sunday schedules at [www.metrolinktrains.com](http://www.metrolinktrains.com).

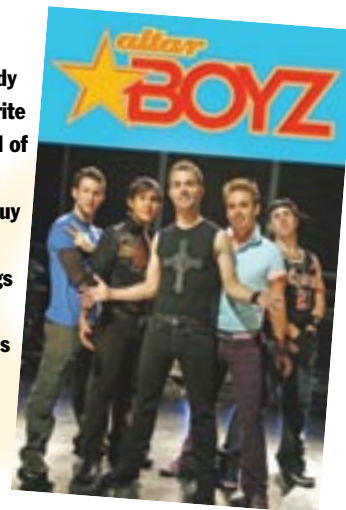
Please remember that the California Speedway and the Fontana Station are separate destinations, so pay close attention to your conductor's announcements when riding to avoid missing your stop.

To purchase race or charter-train tickets, get schedules, or for more information, go to [www.californiaspeedway.com](http://www.californiaspeedway.com) or call (800) 944-RACE (7223). Tickets may also be purchased in advance at the California Speedway, located at 9300 Cherry Avenue in Fontana.

## Contest

**ALTAR BOYZ** is an acclaimed musical comedy that recently won the Audience Award for Favorite Long-Running Musical from Broadway.com. Full of sharp parody, sinfully spectacular dancing, and irreverent humor, this spoof about a heavenly guy group is adored by audiences and critics alike. With an extraordinary mix of side-splitting songs "convincing enough to be played on MTV," uncontrollable laughs, and lighthearted fun, this award-winning musical is 90 minutes of pure delight that's suitable for all ages and will have the whole family laughing and singing along.

For a chance to win one of five pairs of tickets to see **ALTAR BOYZ** at the Wadsworth Theater in Los Angeles on Tuesday, February 13, 2007, at 8 p.m., simply fill out the entry form below and mail it by February 9, 2007, to Metrolink Matters, ALTAR BOYZ Contest, 700 S. Flower Street, Suite 2600, Los Angeles, CA 90017.



### ALTAR BOYZ CONTEST

Name: \_\_\_\_\_

Address: \_\_\_\_\_

E-mail: \_\_\_\_\_

Phone Number: \_\_\_\_\_

All winners will be contacted by phone. One contest entry per person or household. Winners will pick up tickets at the Wadsworth Theater box office's "will call" window.

#### METROLINK MATTERS

Editor-in-Chief: Paul Sitkoff  
Contributors: Charlene Ariza, Tracy Berge, Andrew Ma, Anja Magnani, and Lisa Ng  
Designer: Harlan West/HWDS  
Writing Consultant: Jessica Hoffmann  
C.E.O.: David Solow  
Director, Communications and Development: Steve Lantz  
Manager, External Communications: Francisco Oaxaca

Send comments or story ideas to [metrolinkmatters@scrra.net](mailto:metrolinkmatters@scrra.net) or to Metrolink Matters, 700 S. Flower St., Suite 2600, Los Angeles, CA 90017.

Published by the External Communications Department.

Printed on recycled paper with soy ink.

HWDS1519-1/07

[WWW.METROLINKTRAINS.COM](http://WWW.METROLINKTRAINS.COM)

