

METROLINK MATTERS

METROLINK NEWS AND EVENTS



Metrolink celebrates 20 years of moving Southern Californians

1992



2012



Metrolink started serving customers 20 years ago with just three service lines, 11 stations and 2,300 daily passengers. Today, Metrolink has grown to seven lines, 55 stations and more than 40,000 daily passengers.

Share your memories with us

What are your most memorable Metrolink memories? Share them with us at metrolinkmatters@scra.net with the subject line "Metrolink Memories" or send us

a message at [facebook.com/Metrolink](https://www.facebook.com/Metrolink) by Oct. 15. We will share your entries on our website at metrolinktrains.com/20anniversary

Events and promotions
CicLAvia

Festivals and fairs

Sporting events

Exhibits

Holiday Toy Express® coming to a station near you

Join Metrolink for the 16th annual Holiday Toy Express extravaganza. Our decorative train will make its way to 41 stations, and you won't want to miss out on this year's unique new show. We are staying tight-lipped about the show. You'll have to be there to see it.

Search for clues in this flyer and take your best guess about the theme of this year's Holiday Toy Express show. We will watch for your responses on Facebook and Twitter. See you at the show!



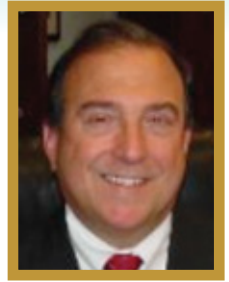
2012 Holiday Train Schedule

Preview Night November 16	
L.A. Union Station	5:45pm
Chatsworth	8:15pm
Saturday November 17	
San Bernardino	5:00pm
Rialto	6:00pm
Fontana	7:15pm
Rancho Cucamonga	8:00pm
Sunday November 18	
Montclair	5:00pm
Upland	5:45pm
Claremont	6:30pm
* Covina	7:45pm
Saturday November 24	
Petaluma	5:00pm
Ontario	5:45pm
Downtown Pomona	6:30pm
Industry	7:25pm
Montebello	8:30pm
Sunday November 25	
Palmdale	5:00pm
Newhall	7:00pm
Sylmar	8:00pm
Saturday December 1	
Cambridge	5:00pm
Oxnard	6:00pm
Moorepark	7:00pm
Sunday December 2	
Van Nuys	5:00pm
Northridge	5:45pm
* Sini Valley	6:45pm
Saturday December 8	
San Clemente	5:00pm
Sunday December 9	
Downtown Burbank	5:00pm
Glendale	5:45pm
El Monte	6:45pm
Baldwin Park	7:45pm
Saturday December 15	
Irvine	5:00pm
Laguna Niguel/Mission Viejo	5:45pm
San Juan Capistrano	6:45pm
Tustin	7:45pm
Sunday December 16	
* Santa Ana	5:00pm
Orange	5:45pm
Anaheim	6:30pm
Fullerton	7:15pm
Saturday December 22	
* Riverside La Sierra	5:00pm
* Corona North Main	5:45pm
Boena Park	7:30pm
Norwalk	8:15pm
Sunday December 23	
Rainy Day	TBD
Visit Metrolinktrains.com	



Metrolink Board of Directors appoints transit industry veteran as new CEO

Metrolink will have a new CEO come Oct. 15. The Metrolink Board of Directors unanimously voted during its Sept. 14 monthly meeting to appoint Michael DePallo as the agency's new CEO. DePallo has more than 30 years of experience in the transportation industry and currently serves as the Director and General Manager for the Port Authority Trans Hudson Corporation (PATH). PATH is a heavy rail subsidiary of the Port Authority of New York and New Jersey that provides more than 250,000 passenger trips a day between Manhattan and neighboring New Jersey.



Metrolink unveils test train equipped with state-of-the-art technology



On Monday, Sept. 10, 2012, Metrolink unveiled a test train equipped with Positive Train Control (PTC) at its downtown Los Angeles layover facility, Keller Yard. Los Angeles Mayor Antonio Villaraigosa, Chair of the National Transportation Safety Board Deborah Hersman, Deputy Administrator of the Federal Railroad Administration Karen Hedlund, regulators and labor union representatives as well as leadership from the BNSF and Union Pacific railroads were there to view Metrolink demonstrate the safety technology. PTC is a life-saving technology that can bring a train to a stop if it is traveling in unauthorized areas or traveling too quickly, preventing an incident before it occurs.



The event was hosted by Metrolink Board Chairman Richard Katz and the Metrolink Board to show the progress that Metrolink has made in implementing the innovative technology. Metrolink has committed to becoming the first commuter railroad in the nation to install PTC ahead of the federal mandate designated by The Rail Safety Act of 2008, which passed after the Sept. 12, 2008, Chatsworth collision.

Giving thanks to you

This Thanksgiving, Metrolink would like to express how grateful we are for all the riders who have used our services throughout our 20-year history. Metrolink would not exist without your support. Our wish is that Metrolink will continue to be as important to your lives as you have been to Metrolink.



We will always strive to meet your transportation needs.

Limited Thanksgiving Day service

We invite you to hop on board our trains to visit your family and friends during the season of thanks. Check our website for our limited Thanksgiving Day schedule and ticket options as November draws nearer. Happy holidays!

Future Metrolink service to Redlands in the works

The San Bernardino Associated Governments (SANBAG), one of Metrolink's five member agencies, is working toward expanding commuter rail service from San Bernardino all the way east to Redlands, a move that Redlands residents and surrounding communities like San Bernardino, Loma Linda, Highland and Yucaipa have awaited for years. The expansion will provide more options to commuters living in San Bernardino, Redlands and surrounding areas, giving them more of an incentive to take public transportation.

The \$180 million project is expected to be completed sometime in 2018. It is being funded by Measure I, the half-cent sales tax approved by San Bernardino County residents for transportation improvements. Additional funding will come from other local, state and federal programs.

Trains are expected to operate from Redlands every 30 minutes during peak hours and every 60 minutes during off-peak hours. In addition, the Metrolink express train will originate in Redlands, providing a one-hour-and-fifteen-minute ride nonstop to downtown Los Angeles.



Events and promotions



San Clemente Seafest

Take a trip to the beautiful beach city of San Clemente to enjoy its 23rd annual Seafest on Oct. 7. The event will feature a surf competition, art exhibits, the popular clam chowder cook-off where local restaurants and residents

compete head-to-head to be crowned the best chowder-maker and a host of other exciting things to see and do.

Take Metrolink's Orange County or Inland Empire-Orange County Line to the San Clemente Pier Station, and you'll be right at the festivities.

For more information, contact the San Clemente Chamber of Commerce at 949-492-1131 or visit scchamber.com

CicLAvia returns

In April, more than 500 cyclists showed up at Metrolink stations around Southern California to catch a train ride to L.A. Union Station to participate in CicLAvia, Los Angeles' largest bike event.

On Oct. 7, Metrolink will be ready to accommodate you and your bikes. We just rolled out four new Bike Cars in time for the event, bringing the total of specially designed cars to 17. Remember, each Bike Car is designed to fit 18 bikes, while other Metrolink cars can hold up to three. Space is available on a first-come, first-served basis, so be sure to arrive at your local Metrolink station bright and early.

CicLAvia is a green initiative that allows an escape from stressful traffic and gives people the chance to connect in ways that aren't possible when they're in their cars. The semi-annual event will take place from 10 a.m. to 3 p.m. and will span nine

CicLAvia and the San Clemente Seafest will occur on the same day this year, Sunday, Oct. 7. Metrolink has been busy planning to accommodate both events. We apologize in advance for any inconvenience you may experience due to high rider turnout. We hope you enjoy both events.

miles of car-free streets where you can explore Los Angeles' historical landmarks, art, food, music and more. Visit ciclavia.org for more information about the route and activities.



Temporary Bike Car schedule adjustment for CicLAvia

You may have noticed the temporary Bike Car schedule adjustment that began on Sept. 30. Metrolink has temporarily shifted its Bike Cars to accommodate lines with the heaviest bicycle ridership during CicLAvia. This means that during the two-week adjustment, the Bike Car schedule listed in your Metrolink timetable does not apply. The temporary adjustment will last through Oct. 13.

During CicLAvia on Oct. 7, additional Bike Cars will be on the following trains:

San Bernardino Line:

To L.A. Union Station:351, 357, 359

From L.A. Union Station:364, 366, 368, 376

Orange County Line:

To L.A. Union Station:661

From L.A. Union Station:666, 664

Antelope Valley Line:

To L.A. Union Station:260, 262

From L.A. Union Station:265, 269

Claremont Village Venture

Head out to the "City of Trees" to experience autumn's largest arts and crafts fair in the Inland Valley. The 31st annual Claremont Village Venture will take place from 9 a.m. until 5 p.m. on Oct. 27, rain or shine, and it is free to the public. Five hundred booths will feature unique arts and crafts, international foods and entertainment. Don't miss out on the children's Halloween costume parade that begins at 9:30 a.m. at the corner of Harvard and Bonita avenues. This year look out for the return of the pre-carved pumpkin competition in Shelton Park. Contact the Claremont Chamber of Commerce at 909-624-1681 or contact@claremontchamber.org, or visit www.claremontchamber.org



Events and promotions

Visit history-making Endeavour at its new SoCal home



Retired space shuttle Endeavour is known for its history-making feats, including saving the Hubble Space Telescope and launching into space the first African-American woman, the first Japanese astronaut and the first married couple to fly on the same mission. Starting Oct. 30, you will have the chance to see the famous NASA orbiter up close at the California Science Center (CSC). It will be temporarily housed at the CSC's Samuel Oschin Space Shuttle Endeavour Display Pavilion for public viewing until its newly built home, the Samuel Oschin Air and Space Center, is completed. Watch Endeavour video footage and view Endeavour-related artifacts. Metrolink ticket holders can save \$2 off adult tickets and \$1 off kids tickets to the California Science Center IMAX theatre. Visit metrolinktrains.com for more details.

LA Auto Show is back

Car lovers look no further. The LA Auto Show is right around the corner. More than 40 new vehicles will make their debut at the show. You will have from Nov. 30 through Dec. 9 to see the hottest new cars in the industry showcased at the Los Angeles Convention Center in downtown Los Angeles. Visit laautoshow.com to find out ticket information and show hours.



Photo courtesy of LA Auto Show



Cheer on the L.A. Clippers

Basketball season officially begins at the end of October. You can avoid sitting in traffic jams on the way to the Staples Center by riding Metrolink to support one of L.A.'s favorite NBA teams. Check our website for more information.

Last chance to see Cleopatra: The Exhibition

Dec. 31 is the last day to make your way to the California Science Center (CSC) to discover the mystery behind the legendary queen. Cleopatra: The Exhibition is the West Coast's only showing of the 13,000-square-foot exhibit of the largest collection of Egypt's Cleopatra-era artifacts ever assembled in the U.S. Metrolink ticket holders receive \$3 off adult tickets and save \$5 with the purchase of the combo package that includes admission into the exhibit and the IMAX movie "Mysteries of Egypt." You can also receive online ticket discounts when you purchase tickets via the CSC's website (californiasciencecenter.org) and use the special code "trains." Visit the CSC's website or call 213-744-2019 for more information.



Join in on the horse-race action at the Breeders' Cup

Watch the best jockeys and their horses contend at this year's Breeders' Cup World Championships, which will be held Nov. 2 to 3. Come watch classic contenders like Dullahan, Ron the Greek and others. Visit breederscup.com for more information.



EXPLORE SOUTHERN CALIFORNIA FOR ONLY \$10 DURING WEEKENDS

You can travel anywhere throughout the Metrolink system where weekend service is offered for only \$10. The Weekend Pass is available at all Ticket Vending Machines starting at 7 p.m. on Fridays, and it's good for travel until 11:59 p.m. on Sundays. Check our website for departure and arrival times. And remember: if you're a Monthly Pass holder, you can ride free on weekends. So grab a friend or family member who can travel with you for only \$10.

Purchasing the \$10 Weekend Pass now easier than ever

If you haven't already noticed, you can now purchase the Weekend Pass in one easy step. Instead of first selecting "Special Ticket Options" and then "Weekend Pass," you can now access the Weekend Pass from the home page of the Ticket Vending Machine. Happy purchasing!

METROLINK SAFETY ALWAYS MATTERS



Inclement weather safety tips

El Niño conditions have been predicted for the winter of 2012 in Southern California. Metrolink is prepared for wet weather and heavy winds and reminds riders to be prepared as well. During inclement weather, the Metrolink team monitors the forecasts to determine an action plan on how to keep our rail lines open or make adjustments, like providing riders alternative transportation, in the event service is disrupted due to the weather.

You can do your part in keeping you and your fellow passengers safe during inclement weather conditions by:

- Storing wet umbrellas in a bag to avoid drips;
- Using extra caution when walking on platforms and on board trains in case there are wet surfaces;
- Using the hand rails at all times when climbing and descending the stairs;
- Being extra aware of your surroundings at crossings and on station platforms; don't allow yourself to be

distracted by texting, talking on a mobile device or listening to your headset;

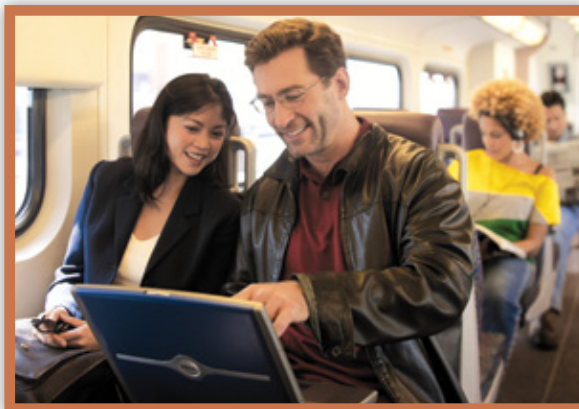
- Understanding that your vision may be obstructed by your hood or umbrella and taking your time when looking both ways before crossing the tracks;
- Arriving at the station early and allowing yourself extra time to park your vehicle and walk to the platform safely; you don't want to have to run in the rain to make a train;
- Choosing appropriate footwear and outerwear for inclement weather conditions.

If you spot a weather-related safety issue at a station (e.g., puddles, fallen branches, fallen canopies, etc.), please contact us at 800-371-5465(LINK). If you notice a safety issue on board the train, notify the train conductor or call 800-371-5465(LINK). We sincerely appreciate your assistance in keeping the system running smoothly and safely during inclement weather.

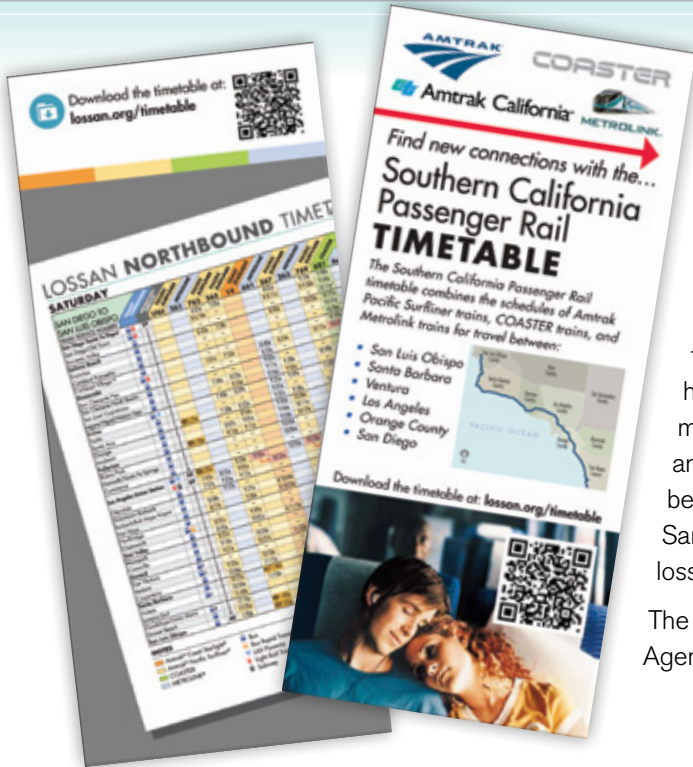
Simple guidelines riders can follow to improve everyone's commute

We can all do our part to make everyone's commute more enjoyable. Below are simple guidelines you can follow during your daily commute:

- Use only one seat. Never place your feet on the opposite seat. Do not take up additional seats with your bags. Store your items below your seat or on your lap.
- Use your quiet "library voice" when speaking with fellow passengers or using your cell phone, especially while in the Quiet Car. Most passengers will be working, reading or resting and will appreciate it.



- Use headphones for audio devices. Please keep the volume at a level that will not disturb your neighbors.
- Gather your coffee cup, food wrappers, papers or other waste and dispose of it as you exit the train.
- Wait for other passengers to detrain before boarding. Never push past people who are exiting the train. Hold the handrail and watch your step when boarding and detraining.



New passenger rail timetable to make SoCal travel easier

Planning travel by rail in Southern California has become a lot easier now that the new Southern California Passenger Rail System Map and Timetable is available to the public. For the first time ever, the schedules of all Southern California rail providers have been integrated into one document that includes a new system map and timetable of combined Metrolink, Amtrak Pacific Surfliner and COASTER train schedules. Commuters can now easily plan trips between Los Angeles, Ventura, Orange, San Diego, San Luis Obispo, Santa Barbara and Ventura counties using multiple rail carriers. Visit lossan.org/timetable for more information.

The LOSSAN (Los Angeles-San Diego-San Luis Obispo) Rail Corridor Agency led the effort to develop the joint timetables.

Join or refer a friend to our Corporate Pass Program for chance to win gift card

If you work for a company with 250 or more employees or know of a company that size, you could qualify to win a \$10 In-N-Out Burger or Starbucks gift card. All you have to do is join Metrolink's Corporate Pass Program (CPP) or provide Metrolink with a referral that leads to an appointment.

Metrolink's Corporate Pass Program (CPP) is a convenient transportation benefit program that offers many perks to commuters. By joining, you can reduce your taxable income by \$1,500 per year (\$125 per month), and your employer can also receive a tax break. Your company will also receive its very own dedicated Metrolink account manager to assist you with all your needs, in addition to all the other perks afforded to members.

Joining Metrolink's CPP is FREE. To learn more about the benefits of enrolling, email cpsales@scrra.net



Platform 7 upgrades to be complete in early October

Approximately \$8.5 million in improvements to Platform 7, one of L.A. Union Station's original boarding platforms, have been completed. The project entailed restoring Tracks 13, 14 and 15, which were removed from service more than 35 years ago. In addition, crews built new stairways and accessible ramps on the north and south sides, connecting to L.A. Union Station's main passenger



tunnel. Both of these improvements will allow Metrolink to better accommodate growing ridership by operating on more tracks and allowing for a smoother flow of passengers to and from the trains and tunnels. Other improvements included installing energy efficient lighting and new message boards and revamping our train yard communication and backup electric systems to facilitate improved emergency response in the event of a power outage.

METROLINK MATTERS

Editor-in-Chief and Writer: Delana Gbenekama

Contributors: Tracy Berge, Jessica Hoffmann and Yena Jeon

Designer: Harlan West/HWDS

Send comments or story ideas to metrolinkmatters@scrra.net or to Metrolink/SCRRRA, One Gateway Plaza, 12th Floor, Los Angeles, CA 90012.

Published by Metrolink Communications

HWDS 9/12

Printed on recycled paper with soy ink.