

# SCORE

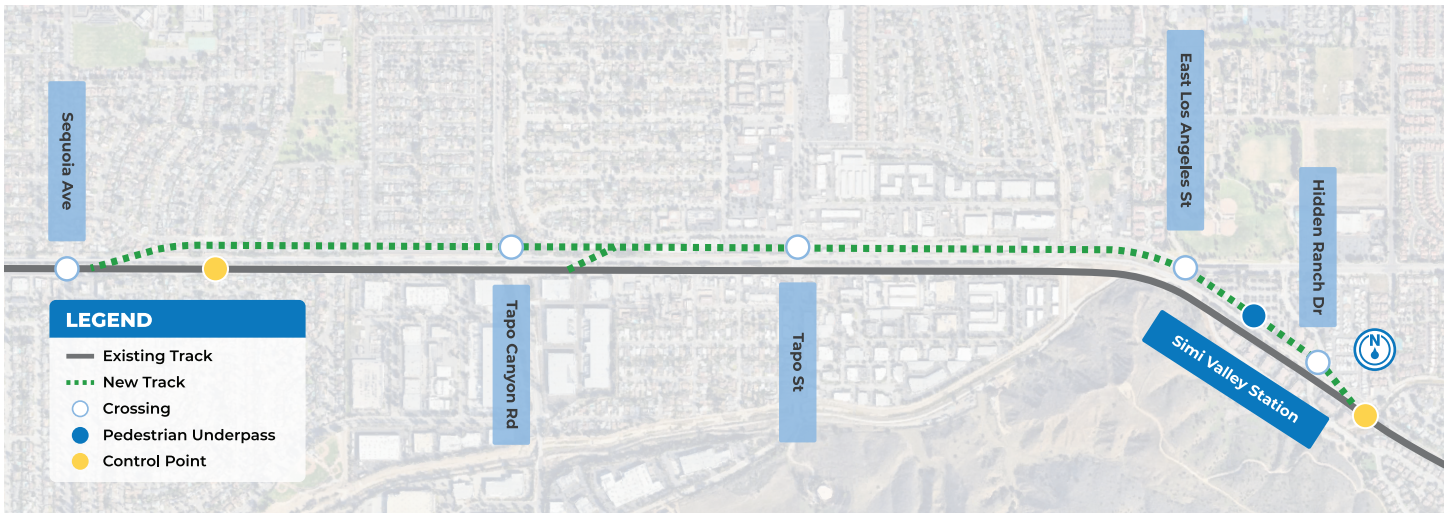
Southern California  
Optimized  
Rail  
Expansion

GET MORE WITH SCORE

METROLINK



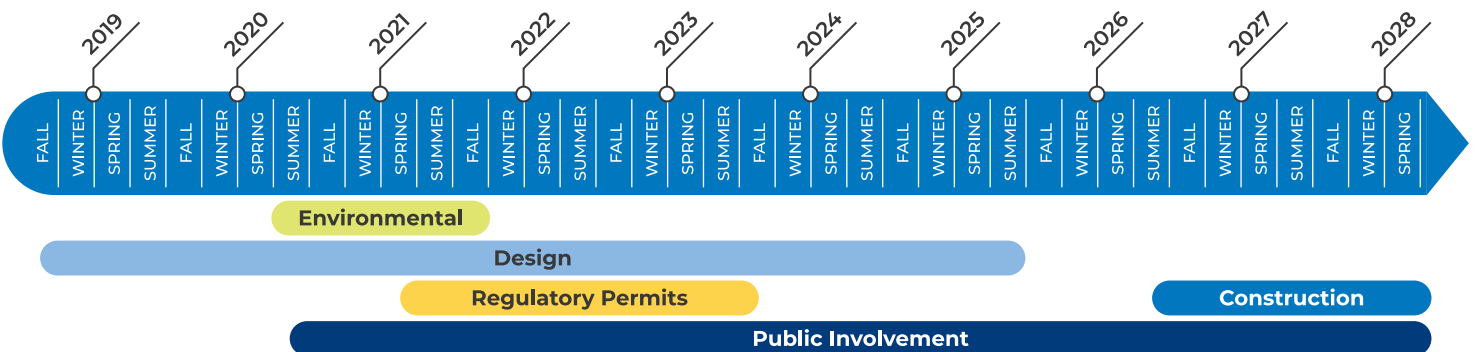
## Simi Valley Double Track Project: Ventura County Line



The Simi Valley Double Track Project is included in Phase 1 of the Metrolink SCORE improvement project that will increase capacity at the station along the Ventura County Line.

### The Project will:

- Improve five at-grade crossings
- Add 2.15 miles of track
- Include new track panels and warning devices at the following at-grade crossings: Sequoia Avenue, Tapo Canyon Road, Tapo Street, East Los Angeles Avenue, and Hidden Ranch Drive
- Provide a new grade-separated pedestrian crossing and a new 680-foot second platform at the Simi Valley Station



# Simi Valley Double Track Project Frequently Asked Questions (FAQs)

## What is SCORE?

Metrolink's Southern California Optimized Rail Expansion (SCORE) program is an ambitious capital program that will upgrade Metrolink's system in time for the 2028 Olympic and Paralympic Games. SCORE is a \$10+ billion capital improvement program — grade crossing, station and signal improvements as well as track additions and work that accelerates progress towards Metrolink's zero-emissions future. Improvements that allow some cities to apply for quiet zones.

## How is SCORE funded?

The majority of SCORE is unfunded. After local partners contributed over \$595 million, Metrolink leveraged those funds against state-level grant opportunities. In 2018, Metrolink was awarded an \$876 million grant from the California Transit Intercity Rail Capital Program (TIRCP) for Phase One of SCORE. To date, Metrolink has raised approximately 23%, or \$2.3 billion, of the \$10+ billion funding goal. Metrolink is identifying and pursuing additional grant opportunities to reach the overall funding goal.

## How are SCORE projects identified and prioritized?

In alignment with the State Rail Plan – a 20-year planning and implementation framework for California's rail network – Metrolink identified railroad improvements that would improve safety, enable more frequent service, and make existing service more reliable. Metrolink's planning team conducted a comprehensive analysis to identify and prioritize major bottlenecks and projects that greatly benefit the operations for multiple rail operators such as Metrolink, Amtrak, BNSF, UPRR and possibly high-speed rail.

## What is the Simi Valley Double Track Project and what improvements will be made?

The Simi Valley Double Track Project is included in Phase 1 of the Metrolink SCORE improvement project that will increase capacity at the station along the Simi Valley Line. The Project will install approximately 2 miles of siding track, which is a short track at the side of an opening onto a railroad line, it is primarily used for shunting or stabling trains. The improvements will also shift approximately 1,400 feet of existing track between East Los Angeles Avenue and the Simi Valley Station. The Project improvements will be divided in two segments that will be completed over two phases. The improvements include new track panels and warning devices at street crossings at Sequoia Avenue (option), Tapo Canyon Road, Tapo Street, East Los Angeles Avenue, and Hidden Ranch Drive. A second platform will also be constructed at the Simi Valley Station.

## What are Quiet Zones?

Quiet Zones ease noise in the community by limiting where and when trains are required to blow their horns. A city is responsible to apply for Quiet Zones, which are a Federal designation, once at-grade improvements are made. Metrolink is proposing to build the safety improvements necessary to make crossings within the Project limits Quiet Zone ready.

## We appreciate your cooperation and understanding while we work to improve tracks in Simi Valley.

### Have a question or a comment about the Simi Valley Double Track Project: Ventura County Line?

Contact: Jeanette Flores, Assistant Director of Public Affairs, SCORE at floresj@scrra.net

## How will the Simi Valley Double Track Project improvements benefit riders?

In the future, passengers will go to a train station and wait no more than 30 minutes for the next train in both directions. Commute times for passengers would be reduced with the increased speed and fluid operations. The Project improvements and updates would allow Metrolink to provide passengers more reliable and safer service.

## What are the benefits to the community?

The Simi Valley Double Track Project would generate jobs and business opportunities, improve safety for pedestrians, vehicles, and trains, provide environmental benefits, and increase the frequency and the reliability of Metrolink service. Ventura County would see reduced traffic congestion and emissions on adjacent freeways, which would result in fewer accidents, reduced air pollution and emissions, and decreased energy consumption. The addition of the second platform will offer less congested access to Simi Valley Station, which has more than 86,000 boardings per year. The upgrades at the crossings will allow the City to apply for Quiet Zone designation to reduce noise.

## What are the economic benefits to the area?

The Los Angeles Economic Development Corporation (LAEDC) was commissioned to produce a study assessing the impact of the construction investment of the SCORE program. The benefits from SCORE will make the region increasingly attractive for the millions projected to arrive in SoCal for the 2028 Summer Olympics and create regional prosperity in the decades to come. Ventura County residents can expect to see 4,800 new jobs and \$912 in gross domestic product by 2028. By 2050, there would be 77,600 new jobs and a collective total of \$33.7 billion in economic activity.

## What is the timeline for the Simi Valley Double Track Project?

The environmental process was complete in fall 2021 and design is expected to be complete in summer of 2025. Regulatory permitting was completed in the spring of 2023. Construction is scheduled to begin in the summer of 2026, with completion expected in the spring of 2028.

## Where can I get more information about this Project?

For more information, please visit [metrolinktrains.com/score](https://metrolinktrains.com/score)

[f metrolink](#) [t metrolink](#) [@ metrolink](#) [v metrolinkmatters](#)

