

Regional Rail

Van Nuys Station Project



TAKE THE TRAIN.
METROLINK.

Project Location

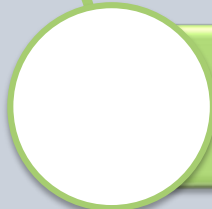




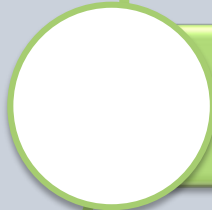
Purpose



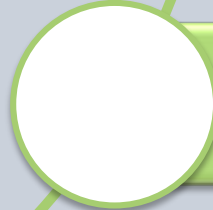
Provide passenger service to both main tracks



Provide safe pedestrian access through a grade separated pedestrian undercrossing



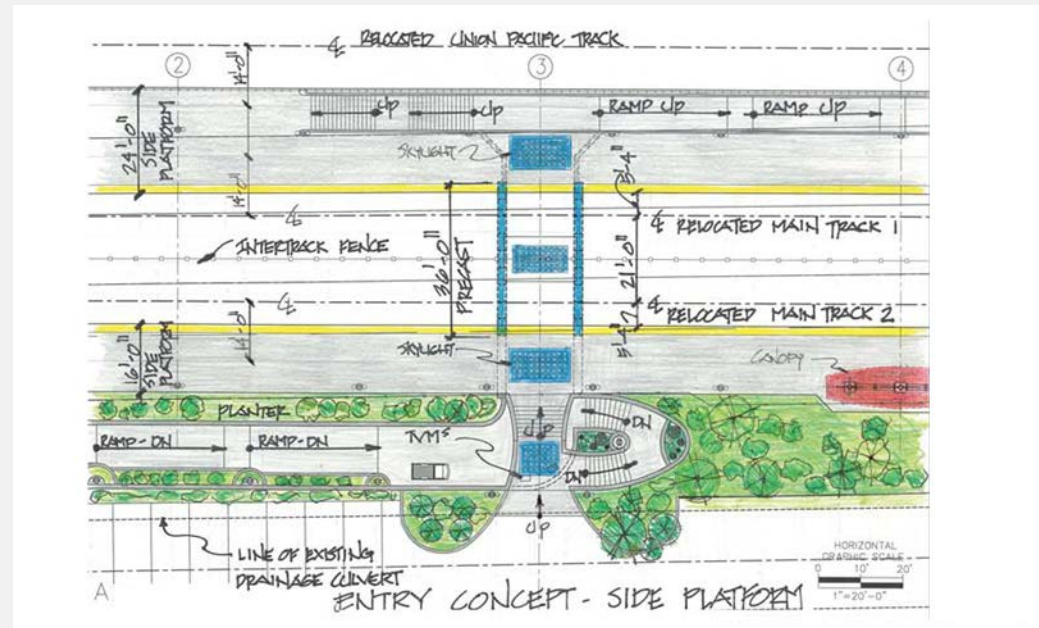
Improve travel times for intercity and commuter rail service



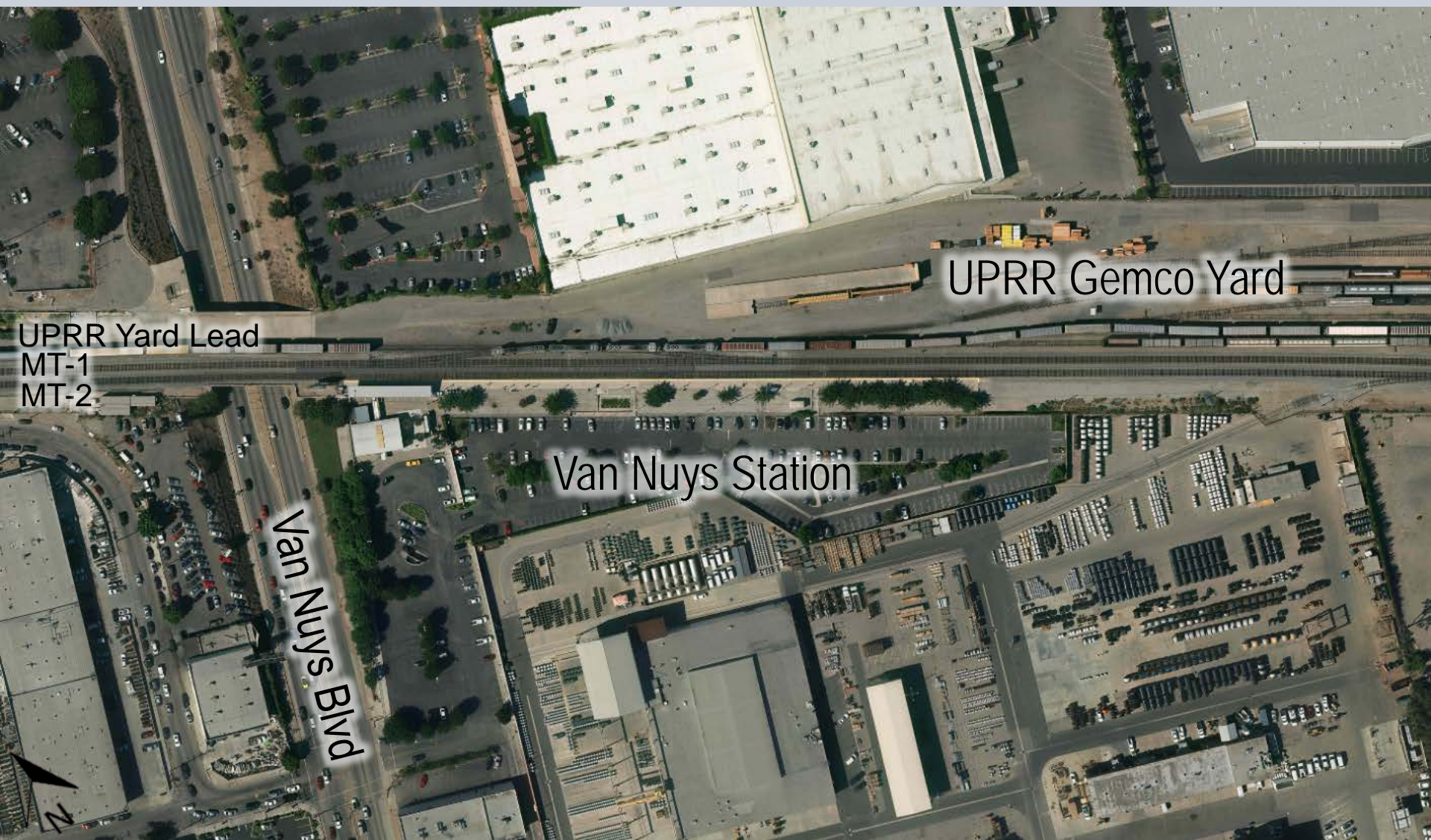
Improve train operational reliability and on-time performance

Latest Developments

- > Previous concept was a side platform.
- > Changed to a center platform:
 - > Minimizes impacts to the bridge.
 - > Eliminates conflicts with the UPRR facility.
 - > Minimizes utility impacts.



Existing Station



UPRR Gemco Yard

UPRR Yard Lead
MT-1
MT-2

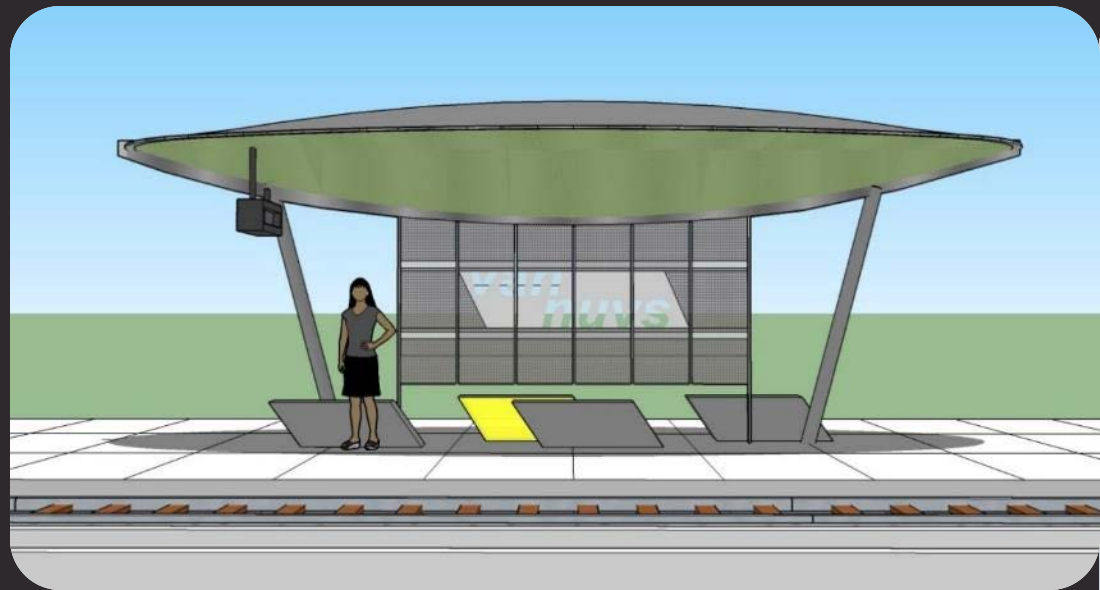
Van Nuys Station

Van Nuys Blvd

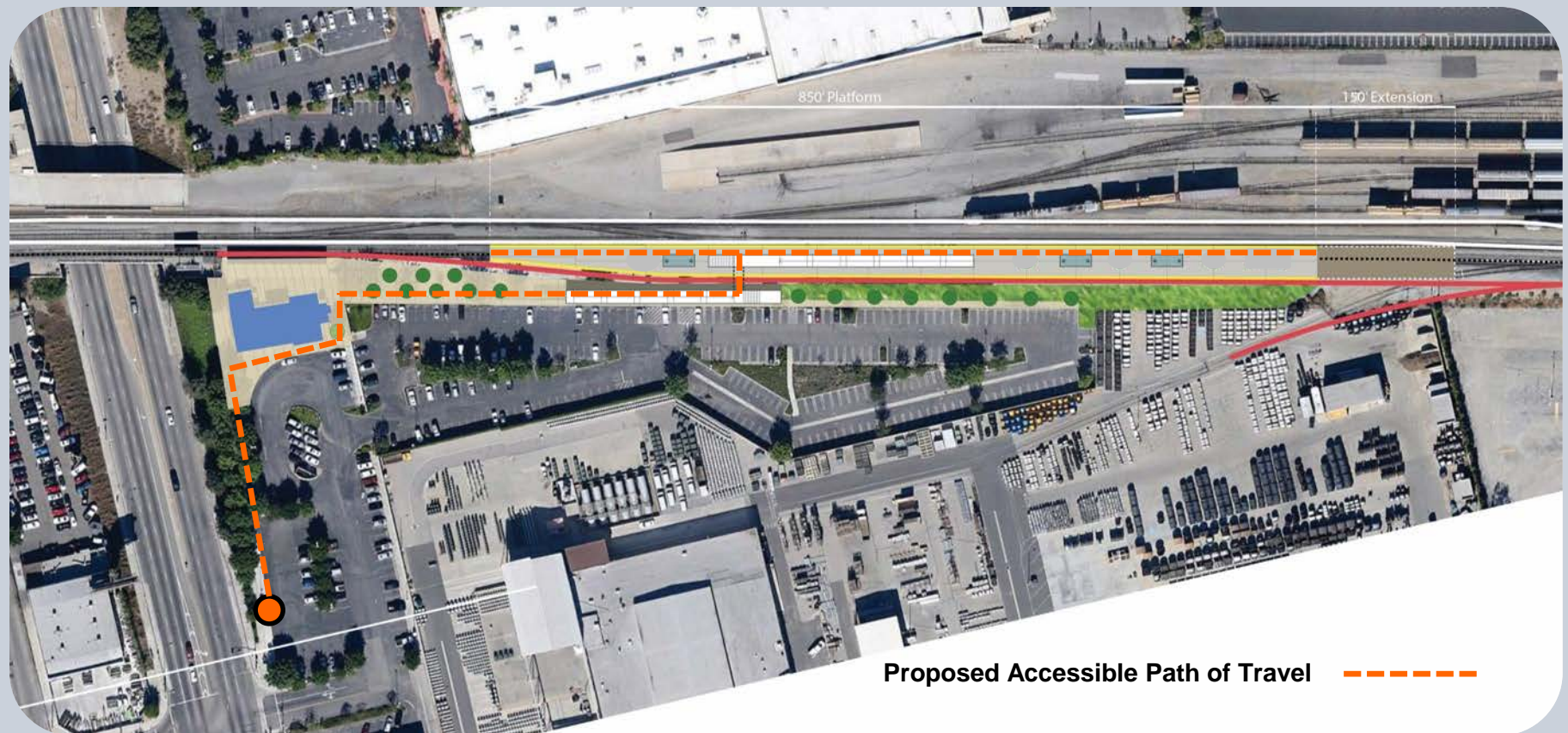
Existing Station

- > The Van Nuys Station serves both Amtrak and Metrolink passengers.
- > The main tracks are shared with the Union Pacific Railroad.
- > Serves 33 trains per weekday
- > 850 foot platform
- > Double track with a single side platform
- > Bus services
 - > DASH and Amtrak Thruway onsite
 - > Metro stops on Van Nuys Blvd.

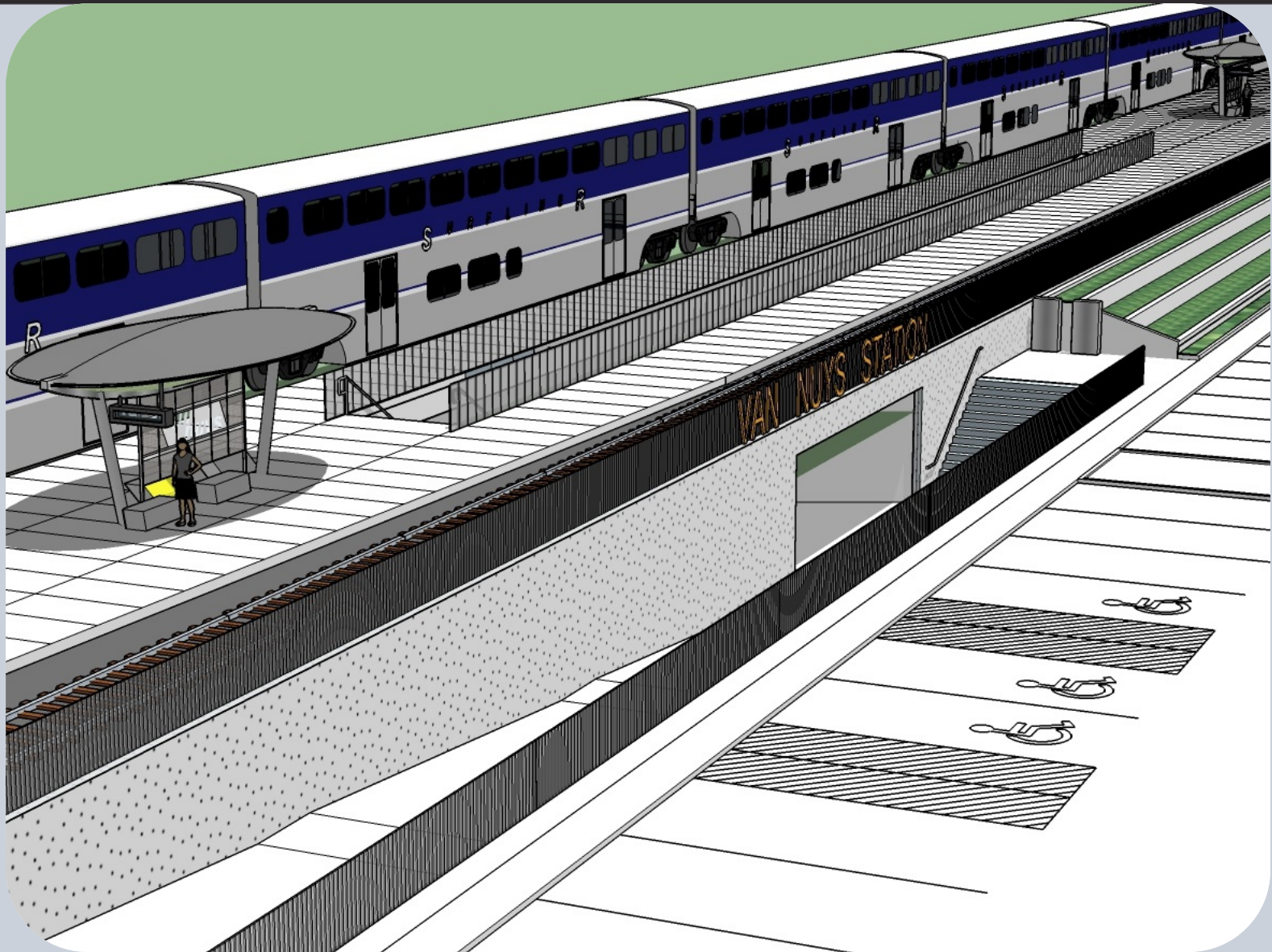
Station Theme



Site Accessibility and Travel Path



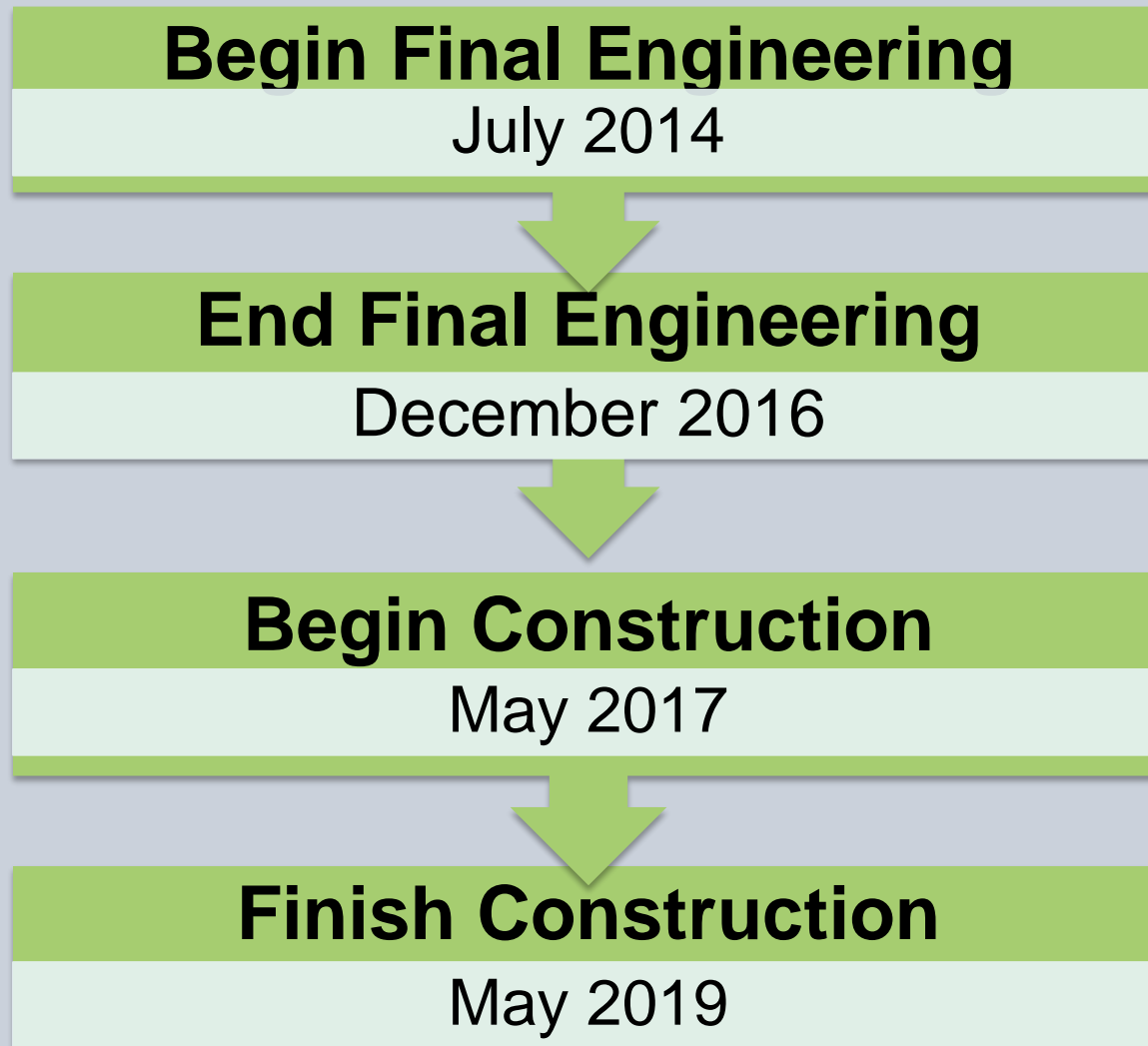
Platform Model



Van Nuys Station



Schedule



Participating Agencies



LADOT



METROLINK



Metro



- METRO
- Metrolink
- Caltrans
- Amtrak
- LADOT (City)
- UPRR

Contact Us!

Please feel free to
contact us with any
additional questions or
comments!

**Sylvia Novoa, Metrolink
Community Affairs**

novoas@scrra.net

(213) 452-0300



**TAKE THE TRAIN.
METROLINK.**